





Hilary Martin, Assistant Principal; Jimmy Bushulen, Bookstore Manager; J. H. Windrow, Principal; Kim Smith, Business Manager; Mrs. Jean Hill, Guidance Counselor; Miss Evelyn Wright, Secretary.

## ADMINISTRATION



GUIDANCE STAFF: Mrs. Jean Hill, Joe Sbuttoni, and Miss Dean Hannah.

Setting up the schedules, running the book store, counseling students, advising teachers, and handling the school's finances are some of the many duties of the administration. The "head man," Mr. Windrow makes the final decisions. Without these people, the school could not possibly get along.

The duties of the guidance staff include making necessary class changes, advising students about colleges, solving problems, administering tests, planning career assembly programs, sponsoring the homeroom guidance programs, and many, many others.



OFFICE WORKERS: Randy Hall, Sharon Talbert, Miss Wright, Carol Hugh Sharon Spelta, Mr. Windrow, Burma Harrison, Carole Belcher, Dianne Hamp Paulette Hinkle.

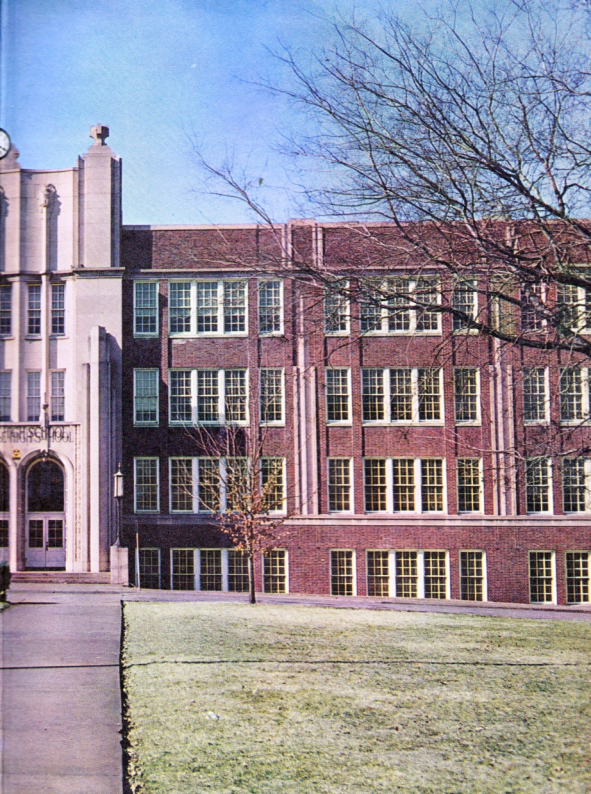


VICKIE THOMPSON

Vickie  
Stay as cute  
and sweet as you  
are and you  
won't have any  
trouble with the  
Principals!



EAST NASHVILLE



N  
EAST

S  
H  
V  
I  
L  
L  
E

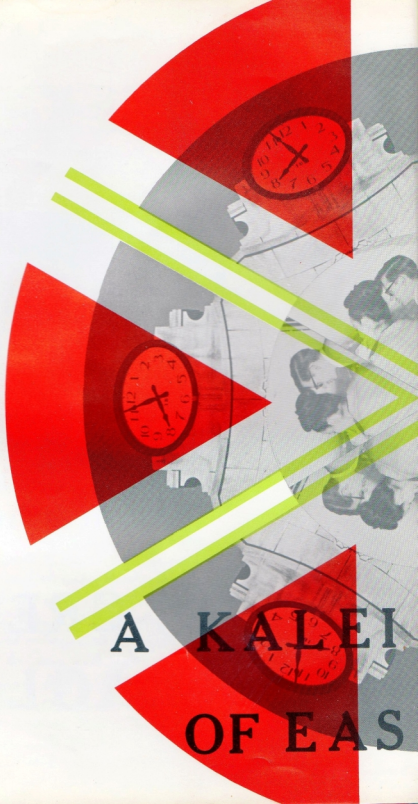
H  
I  
G  
H



NASHVILLE, TENNESSEE

1965 GREY  
EAGLE

STUDENT UNION



A KALEI  
OF EAS



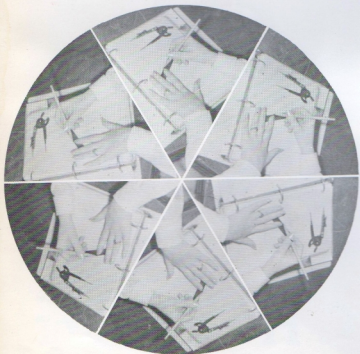
# A KALEIDOSCOPE

A glance at the clocks a few minutes before the bell rings . . . a couple daydreaming at a fourth-floor window . . . a new student teacher in math class . . . hours and hours of practice before that big game . . . the afternoon dash for the school bus . . . concentration on a difficult homework assignment . . . another day, another design . . . somewhat like the day before, yet different, with changed faces, varied activities, new ideas. The endless varieties of patterns are like those in one of childhood's toys, the kaleidoscope. In the following pages you will see parts of the ever-changing pattern of your school life—  
A KALEIDOSCOPE of EAST HIGH.

## CONTENTS

CLASSES.....	4
STUDENTS.....	12
ORGANIZATIONS.....	56
ACTIVITIES.....	78
SPORTS.....	90
HONORS.....	104
ADVERTISEMENTS.....	128

DOSCOPE  
T HIGH





# CLASSES

*The clicking of typewriters, the ringing of bells, laughing voices, and "Good morning, may I have your attention for the announcements, please" echo through the halls. Another day of classes has begun.*

*The huffing table on a slide rule, cramming for exams, and the cleaning up after working in the afternoon are only memories now. Though for awhile, there are no more books to read, no reports to make, and no piles of homework before us, the lessons learned will stick with us. These classes, an integral part of our lives, are over for some. For others, there awaits a summer vacation and a return to more school in the fall.*

*Yet the hours of study, the concern of our teachers, and the anxiously anticipated report cards are a big part of the kaleidoscope that is East High.*

# ENGLISH • SPEECH • LIBRARY

Miss Katherine Atkinson  
English, B.A., M.S.



Mrs. Eleanor Basler  
English, B.A., M.S.



Mrs. Norma DeJarnette  
English, Speech, B.A.



Mrs. Joan Haynie  
English, B.A.



Mrs. Deyay Hendrick  
English, Speech, B.A.



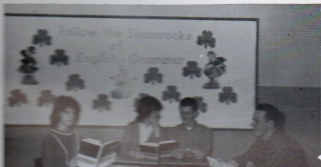
Mrs. Cornelia Mitchell  
English, B.A.



Miss Katherine Sneed  
English, B.S.



Mrs. Sarah Payne  
Librarian, B.A.



Studying the parts of speech helps Deanne Bass, Amanda Willis, Doug Collins, and Jerry Shadix become better speakers.

English is the only subject required for all three years at East High School. It is vitally necessary for every student to learn to speak correctly and to compose clear paragraphs and reports. These skills are taught along with the study of American and English literature.

Beginning with the library lessons in the sophomore English classes, every student at East learns how to look up material in the library. This knowledge is used constantly when writing reports, checking facts, or simply finding a book for pleasure.



As Jean Graves checks out her book, Mrs. Payne, the librarian, helps Elaine Mathis, Georgia Stafford, and Bonnie Garner with their library duties.



# HOME ECONOMICS    INDUSTRIAL ARTS

Mrs. Jesse Cabler  
Home Economics, Bio-  
logy, B.S.



Mrs. Nell Pinkerton  
Home Economics, B.S.



NOT PICTURED  
Mr. William Kee  
Industrial Arts, B.A.

## BUSINESS EDUCATION



Mrs. Dell Creelius  
Commerce, A.B.



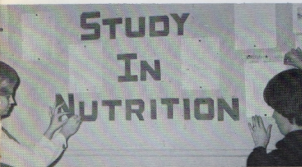
Miss Jo Ann Marie Kness  
Commerce, B.S.



Miss Mary McKeel  
Commerce, A.B., M.A.



Mr. Joseph Sbuttoni  
Commerce, B.A., M.A.



Home Ec. students, Pat Bond and Brenda Brown, prepare a bulletin board on nutrition, to brighten their classroom.

To prepare students for future vocations is the goal of the Home Economics, Industrial Arts, and Business Education Departments. Future industrialists, homemakers, and business leaders are even now studying in the workshops, laboratories, and classrooms of East.



"Are you ready?" asks Wanda Ashburn as she starts the record for Anita Field's dictation.



Ernest Gregory steadies the plank as his fellow classmate in industrial arts, Robert Huff, begins to cut it with the power saw.

# SCIENCE • MATH • MUSIC

Mr. Larry Mitchell  
Biology, Math, M.S.



Miss Lucille Scott  
Science, B.S., M.A.



Mrs. Joan Whitlow  
Science, B.S.



Miss Dean Hannah  
Math, B.S., M.A.



Mr. Sam Rawls  
Math, B.A., M.A.



Mr. Rufus Long  
Band, B.S., M.A.



Miss Frances Southerland  
Music, B.M., M.M.



Jimmy Rogers, Judy Gifford, and Barry St. John discuss their stories finding math in action in the bulletin board pictures.

Triangles and squares, x's and y's, and sines and cosines are familiar words to every math student of Miss Hannah or Mr. Rawls. These two teachers offer geometry, general math, trigonometry and advanced math, and two years of algebra.

Whether experimenting with oxygen, puzzling over physics problems, or taking notes from the television teacher, the science students remain fascinated by the many wonders of science. Chemistry, physics, biology, and general science are all offered at East.

"I hope it doesn't explode!" says Jim Norris as he, John Dickens, Cheryl Gregory, Becky Mitchell, and Jerry Windsor experiment in chemistry class.



# SOCIAL STUDIES · ARTS LANGUAGES

Mr. W. C. Crews  
Social Studies, B.A.



Miss Louise Martin  
Social Studies, B.A.



NOT PICTURED  
Mr. James Bushulen  
Social Studies, B.A., M.A.

American History, Economics and Government, World History, and World Geography are some of the courses offered at East in the field of social studies. American History is a required subject for all juniors.



Mr. Michael Traugbter  
Social Studies, Latin, B.A.



Mrs. Louise Payne  
Modern Languages, English, B.A.



Mr. Donald Vaughn  
Art, B.A., M.A.

*Vickie -  
I know you are a  
great student although  
I don't have you in class.  
Be good & make Kenny  
behave. D. Vaughn*

Anyone visiting the art room on the first floor will be impressed by the talent of the art students. Study of color, design, perspective, and balance in different media help develop their skill.



Listening closely to their voices recorded in our new language lab are Cherrie Phillips and Bob Bruce.

At the present, three years of French, two of Spanish, and two years of Latin are taught at the school. Audio-visual equipment in the new language laboratory has helped greatly in the study of these difficult subjects.

"Modern art" is the discussion topic for artists Jimmy Harre and Jimmy Fuller.



## DISTRIBUTIVE EDUCATION DIVERSIFIED OCCUPATIONS



Mr. Kenneth Anderson  
Distributive Education,  
B.A., M.A.



Mr. Archie Grant  
Diversified Occupations,  
B.S., M.A.

D.E. and D.O. give students an opportunity to work and go to school at the same time. After attending classes in the morning, these people leave for their jobs. They are graded in their work and receive regular credits toward graduation. Conventions are held during the year where students can compete in such areas as typing and public speaking.

*Vickie,  
It was a pleasure  
to have you in class this  
year. You are a real sweet  
girl and I'm looking forward  
to seeing you next year.  
Have a nice summer  
Miss Young*



Linda Lilly and Diane Bryant are worried with income tax forms now that they have had part-time jobs after their classes.



Mr. Kim Smith  
Driver's Training, B.S., M.A.



Mr. Vic Varallo  
Physical Education,  
B.A., M.A.



Miss Helen Young  
Physical Education, B.A.

## DRIVER'S TRAINING PHYSICAL EDUCATION

Driver's training students wait anxiously as Donna Olfine takes the written test given by the highway patrolman.



After studying the workings of cars and learning to drive for one semester, drivers' training students can take their driving test for their license.

Physical Education, a required course, gives students a chance to play in group sports and to keep physically fit.

This is the "human pyramid" formed by these six girls from the Physical Education class. They are, bottom to top: Patsy Brown, Lillian Hendricks, and Becky Hyde; Frances Holt and Evelyn Lisey; and Mary Lou Bolton.





There is a  
group of  
people  
who are  
not  
part  
of  
the  
main  
group  
but  
are  
still  
part  
of  
the  
whole  
group.

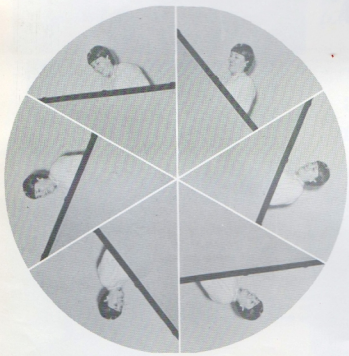


EXHIBIT 10-10-10  
10-10-10



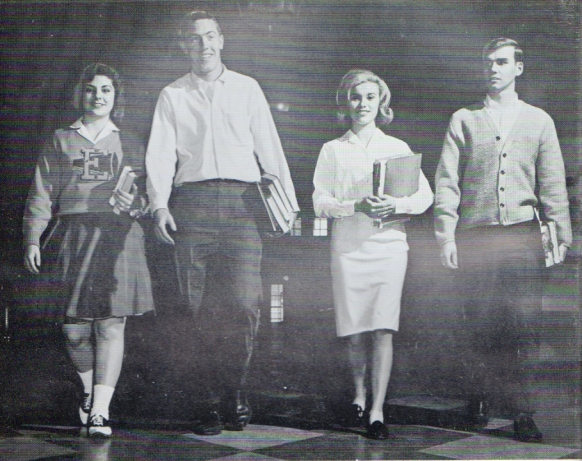
No one of the  
sweetest girls  
except when she  
is mad as Kenny.  
"Loater"

# STUDENTS

The main part of our Kaleidoscope is made of students—boys running down the track in red uniforms, girls bending intently over whirring sewing machines, couples dancing to the mad beat of a combo, pupils reciting a poem by Wordsworth or maybe Longfellow.

The students are the soul and body of the school. They determine its character and its personality through their various activities, sports, organizations, and classes. The school, like its young people is often carefree and happy, but it has its serious side and its solemn moments also.

Many of the students pictured in the following pages will one day be only memories to you. But just as they make up the personality of the school, they will have helped to form your character also.



SENIOR CLASS OFFICERS: Donna Jones, Treasurer; Ronnie Stiltz, Vice-President; Pat Edens, Secretary; David Lane, President.

## THE SENIOR CLASS

As the Class of 1965 leaves East High School, its members can look back over three years of work and play, tears and laughter. They are not the same people as when they came. Those three years have brought them closer to maturity and increased their knowledge in many areas.

During the past year, the seniors were the leaders of the school. Because they were looked up to by the

under-classmen, the seniors were responsible for maintaining the school's standards in their various positions of leadership. This was a new experience, but it taught them valuable lessons.

The senior year was the goal of twelve years of education. Now that it has been reached, these young people can move on to greater things and find new goals to accomplish.

LARRY ABERNATHY



CHARLES ALLEN ADAMS  
Audio-Visual Club 2,3,4.

ROY ALLEN  
Chess Club 2,3; Art 3,4



LINDA ANDERSON  
Pep Club 3; Music Club 4;  
Y-Teens 4

*Passed away.*



JOYCE MARIE ANDREWS  
FBLA 2; Y-Teens 2,3,4; Pep Club 2,3,4.



PATSY ARNOLD



WANDA JEWEL ASHBURN  
Christian Service Club 2,3,4; Pep Club 2,3,4; Ski Club 2;  
Y-Teens 3,4; Bowling Club 2; Civinette 4; Chorus 4; Monitor  
3,4; Miss East High Contest 2,3,4; Student Council 3.



JOHN E. AUGUSTINE  
Ryan 2,3.

*Passed away*



NORMA BAILEY  
Y-Teens 2; Pep Club 2,3,4; FBLA 2.



LYNDA BAKER  
Pep Club 2,3,4; Bowling Club 3; Y-Teens 2,3; Ski Club 2,3.



**BILL BARNES**

Civitan Club 3,4; Sec. 4; Male Chorus 3,4; Mass Chorus 3,4; Ensemble 3,4; Audio Visual 2; Track 2,4, Lettered 2,3; Football 4; All Round Superlative 4; All-State Chorus 4; All-Star Chorus 4.



**GEORGE EDWARD BARNETT**  
Chorus 2,3,4; Math Club 3; Future Teachers Club 3,4; Audio-Visual All-State Chorus 4; All-Star Chorus 4.

**LINDA CAROL BASKETTE**

Red Cross 2; Future Men of Medicine 2; Pep Club 4; Y-Teens 4; Future Homemakers of America 3.

**MARY JANE BATEY**

Pep Club 2; Band Camp 4, Band Lettered 2,4; Library Club 2,4; Honor Society 4; Latin Club 4; V. Pres. 4; No Smoke, No Drink Club 2,4.

**STELLA BATSON**

Future Business Leaders of America 2,3; Pep Club 4; Y-Teens 4; FBLA Convention 1963.

**CAROLE BELCHER**

Future Business Leaders of America 2; No Smoke, No Drink Club Library 3,4; Red Cross 4.

**PATRICIA ALEXIS BELLOS**

Ensemble 2,3, Lettered, Chorus 2,3,4; Bowling Club 2; Pep Club 2,3,4; Future Business Leaders 3; Y-Teens 4; No Smoke, No Drink Club 2,3,4; Annual Staff 4; Monitor 3,4.

**SANDRA BOBBITT**

Homecoming Attendant 4; Most Bashful Girl 4; Prom Court 4; Pep Club 2,3,4; Y-Teens 2; Bowling Club 2,3,4; League Champ 3, Runner-up 2; H.R.V. Pres. 2, Pres. 3,4, Class Treasurer 3, Bowling Captain 3.

**RONNIE RAY BOLTON**

Art Club 2,4; Ski Club 2; No Smoke, No Drink Club 2.

**LARRY BOYD**

National Math Club 3,4; Pres. 4; Math Contest 2; Most Likely to Succeed 4; Honor Society 3,4; Quizbusters 4; Student Council 3; Student Court 4; French Club 4; Chorus 3; Monitor 4; Basketball 3; Track 3; Cross-Country 3; Nominee V. Pres. Student Body 3.



HARRY LYNN BRASSELL



SHERYN LEE BRATTEN  
Pep Club 2; FBLA 2; Y-Teens 2;  
Red Cross 3; No Smoke, No Drink  
2,3,4; Future Homemakers 3,4;  
V. Pres. 4; Historian 4; FHA Con-  
vention at MTSC 4.



AN BREWINGTON  
Future Men of Medicine 2; No Smoke,  
No Drink Club 2,3,4; FBLA 3,4.



VIVIAN SUE BRINLEE  
North 2,3; Junior Achievement 2,3,4;  
Treas. 3; Future Homemakers 4.



ROLYN JEANETTE BROOKS  
FBLA 2; Chorus 2,3,4.



GWENDOLYN DIANE BRUCE  
Cheerleader 3, Clinic 3, Lettered  
4; Prom Decorating Committee 3;  
Christmas Dance Committee 4;  
Junior Achievement 3,4; Wittiest  
Girls 4; Pep Club 2,3,4, Treas. 4;  
Bowling Club 2,3; Ski Club 2,3,4;  
V.Pres. 2; Red Cross 2; Y-Teens  
2,3,4; Student Council 2,3; Band  
2,3,4, Lettered 2,3,4; Band Camp  
2,3; Chorus 3,4, Lettered 3; En-  
semble 3.



MARY BULLARD



LARRY CURTIS BULLION  
Spanish Club 2,3; FBLA 2; Band 2,3,4, Band Camp 2,3,4.



STEPHEN D. BUMBALOUGH  
Ensemble 2,3, Lettered 2,3; Male Chorus 2,3,4; All-Star Chorus  
4; Honor Society 3,4; Student Court 2; Forensic League 3;  
Chess Club 2; Trade and Industry 4; Diversified Occupations 4.



CAROLYN BURKE



EDNA BURNETT  
Y-Teens 4; Pep Club 4.



BARBARA ELLA BURTON  
Band 2,3,4, Band Camp 2,3,4, Music Festival 3,4; Color Guard 3,4; Chess Club 2, Sec-Treas. 2; French Club 2, Forensic League 3; Bowling Club 3.



JERRY BUSH  
Key Club 2,3,4; Sec. 4; Bowling Club 4; Pep Club 3; No Smoke, No Drink Club 2,3,4; Basketball 2,3,4; Cross Country 2.

*Passed away  
from cancer*



PETE CANNON  
Basketball 2,3,4; Cross Country 2,3; Track 2,3,4; Most Valuable Player 3; H. R. Pres. 2,3.

STARR CASEY

Civinettes 4; Home Ec. Award 3; Bookkeeping Medal 2; Chorus 4; Annual Staff 4; Future Homemakers of America 3; Pep Club 2,3,4; Y-Teens 2-Pres.; Spanish Club 2,3; No Smoke No Drink Club 2,3,4; FBLA 2,3,4-Pres. 3, State Pres. 4; Student Council 4; FBLA Convention 3,4; FHA Convention 3.



ELLIOTT CATHEY

Chorus 2,3,4; Ensemble 2,3; Lettered 2,3; Male Chorus 2,3,4; All-Star Chorus 2; Music Club 4; V.Pres. 4; Math Club 4; Student Council 4.

CLAUDE ALLEN CANTER

Cooperative Training Club 3,4; Trade and Industry Club 3,4.



RANDY CHOATE

Diversified Occupations 4; Trade and Industry Club 4.

CHARLES DEWEY CHURCHWELL



MICHAEL LEROY COLLIER

Key Club 3,4; Sgt. At Arms 4; Bowling Club 3,4; Football 2,3,4; Lettered 4; Rifle Team 2,3,4; Lettered 4; Basketball 2,3; Tennis 2,3; Lettered 2,3.



**TOMMY COMPTON**  
Chess Club 2; Science Club 2.



**LINDA KAY CONQUEST**  
Honor Society 3,4, Sec. 3; Civinette Club 3,4, Pres. 4; Band 2,3,4, Band Camp 2,3,4, Lettered 2,3,4; Most Dignified Girl 4; Spanish Award 3; Pep Club 3; Spanish Club 2,3, V. Pres. 3; Y-Teens 2; Math Club 4.



**PATRICIA CAROL COPELEN**  
Pep Club 3; Y-Teens 3.



**DON CRAFTON**  
Key Club 4; Christian Service 4; Pep Club 4; Hi-Y 2,3.

**LINDA CRAUS**

French Club 2,3,4; Pep Club 2,3; Y-Teens 2,3; Bowling Club 2,3; NFL 3,4; Honor Society 4; Junior Achievement 3,4, President 3,4, President of the Year 3; Achiever's Association 4-Treasurer, Conference 3,4.



**DANNY CROSBY**

Cooperative Training 3,4; Trade and Industry Club 3,4.

**EMILY CROWDER**

Honor Society 3,4; Sec.-Treas. 4; Civinettes 4; Chorus 4; Solo, Ensemble Festival 4; Annual Staff 4; Monitor 3,4; FBLA 3, FBLA Convention 3; Math Club 4; Pep Club 2,3,4; Bowling Club 3,4; French Club 2; H.R. Sec. 3; Breakfast Club 3.



**PAUL ALAN CROWELL**

Student Council 2; Bowling Club 2,3; Distributive Education 4; District D. E. Leadership Conference 4.

**BECKY CUNNINGHAM**

Y-Teens 3,4; Pep Club 3; Future Men of Medicine 2, Sec.-Treas. 2; Red Cross 4; FBLA 4; Library Club 2.



**WAYNE CUNNINGHAM**

SUSAN NANN CUTRELL

Red Cross 2,3,4, Pres. 2,3, Treas.  
4, Carnival 3, Workshop 2, Fall  
Convention 3; Annual Staff 4; Li-  
brary Club 2; Chorus 2; No Smo-  
No Drink Club 2,3,4; Pep Cl- 2,  
3; Math Club 3; Choral Contes. 2.



BILLY DALE

Basketball 3; Baseball 2,3,4,  
Lettered 2,3,4; Bowling Club 2,  
3,4.

*1-30-63  
Died of heart attack*

JAMES N. DAVIS

Maplewood 2,3; Distributive Edu-  
cation 4, District D.E. Leader-  
ship Conference 4.



SUSAN LARAINE DAVIS

Future Homemakers 3,4, Sec. 4,  
Miss F.H.A. 3; Y-Teens 2; Red  
Cross 3; Convention at MTSC.



MARGIE SUE DeMOSS

Red Cross 3,4, Treas. 3, V. Pres. 4, Convention 3; Pep Club 3;  
Annual Staff 4; Distributive Education 4, District D.E. Leader-  
ship Conference 4.

MARY FRANCES DePRIEST



*2-15-65  
Died away*

BRENDA EMILY DICKSON

Franklin High 2; Y-Teens 3; Pep Club 3; Forensic League 4;  
Red Cross 4, Chaplain 4.

*6-3-65  
Died away*

LINDA PAGE DICKSON

Franklin High 2; Y-Teens 3,4; Pep Club 3,4; Library Club 3.



ROGER WAYNE DIXON

Key Club 4; Bowling Club 2,3,4; Sec. 4; Hi-Y 2,3, Treas. 3; Rifle  
Club 2,3; Chorus 3 4; Ski Club 2; Prom Committee 3.

DONNA DORSETT

Pep Club 2; Bowling Club 2; Eagle Staff 3; Junior Achievement  
4, Local Conference 4; Forensic League 4; Conference at Mont-  
gomery Bell.





**WILLIAM RICHARD DOWNEY**  
 Band 2,3,4, Lettered 2,3,4;  
 Festival 2,3, Solo Trumpet 2,  
 3, Drum Major 4; Math Club  
 3,4; Math Contest 2; Ski  
 Club 2; H.R. Treas. 4;  
 Breakfast Club 3.



**GAYLE DRENNAN**  
 Honor Society 3,4; Eagle Staff  
 2,3; Quill and Scroll Club 3,4;  
 Civinettes 4; French Club 2,3,4;  
 Pep Club 2,3; Y-Teens 2,3;  
 Bowling 2,3,4; "Youth Speaks  
 Out" Winner 3; Tenn. High  
 School Press Convention 2;  
 Forensic League 4; Junior  
 Achievement 3,4, Local and  
 Southeastern Conference 3;  
 Univ. of Tenn. Student Pre-  
 view 3,4; H.R. Pres. 2.

**JANET DUKES**  
 Litmus 2; Christian Service  
 Club 2; Pep Club 2,3,4;  
 Y-Teens 3; H.R. Sec. 3;  
 Bowling Club 4.



**MIKE DUNHAM**  
 Football Manager 2,3,4, Lettered  
 2,3,4; Basketball Manager  
 2,3,4; Lettered 2,3,4; Track Man-  
 ager 2,3,4, Lettered 2,3,4; Civi-  
 tan Club 3,4; V. Pres. 4; Ski  
 Club 2; Audio-Visual 2,3; Math  
 Club 4; No Smoke, No Drink Club  
 2,3,4; Alternate to Boys' State 3,  
 Breakfast Club 2; Nominee Civi-  
 tan Medalist 3; Nominee Best  
 School Spirit 3.



**JOE DUNN**  
 Music Club 4.

**JOHNNY DURHAM**  
 Distributive Education 4; District D. E. Leadership Conference 4.



**NANCY EAKER**  
 French Award 2; Binology Award 2; Service Award 3; French Club,  
 V. Pres. 3; Library Club 3,4, Treas. 4, Middle Tennessee Con-  
 vention 3; Math Contest 2,3; U. T. Journalists Institute 3; Annual  
 Staff 3,4; Editor 4; Civinettes 3,4, Chaplain 4; Honor Society 3,4;  
 Most Likely to Succeed 4; Class Prophet 4; DAR Award 4; Merit  
 Scholarship Finalist 4.

**LINDA FAY EDDINGS**  
 Band 2,3,4, Lettered 2,3,4, Majorette 2,3,4, Marching Contest 3,  
 4, Festival 2,3,4; Honorable Mention in Vanderbilt Science Fair 2;  
 French Club 2,3,4; Ski Club 2,3; Chess Club 2; Pep Club 3,4.

**BRENDA FAYE EDENS**  
 Most Popular Girl 4; V. Pres. of Student Body 4; Sec. of Class 2;  
 Sec. of Class 3; Student Council 2,3,4; Pres. 4, Chaplain 3; No  
 Smoke, No Drink Club 2,3,4; Red Cross 2,3,4; Civinettes 3,4;  
 Alternate Cheerleader 3, Co-Captain 4, Lettered 3,4, Clinic 3,4,  
 (TASC-McMinnville, Tenn. 4); Y-Teens 2; Pep Club 2,3,4, Sec. 3;  
 Bowling Club 2,3,4, Runner-up 2, Champs 3; Clinic Staff 3; Moni-  
 tor 3; Nominee D.A.R. Medalist 4.

**PATRICIA ANN EDENS**  
 Class V. Pres. 3; Class Sec. 4; Willmaker 4; Band 2,3,4, Sec. 4,  
 Lettered 3,4, Band Camp 2,3,4, Majorette 2,3,4, Head Majorette  
 3,4, Representative to Band 2,3, Band Sponsor 4, Festival,  
 Marching 3,4; No Smoke, No Drink Club 2,3,4; Bowling Club 2,3,  
 4; Champs 3 French Club 2,3; Junior Achievement 2; Pep Club 2,  
 3,4, Pres. 4; Y-Teens 4; Honor Society 4; Civinettes 4; H. R.  
 Treas. 4; H. R. Pres. 4; Breakfast Club 3; Most Improved Major-  
 ette 2.





**LONNIE EIDSON**

Co-Operative Training 3,4; Trade and Industry Club 3,4, 2nd Place in the Spelling Contest.

**JAMES B. ESCUE, JR.**  
Latin Club 4.



**PATRICIA ANN ESTES**

Future Business Leaders 2,3; Pep Club 3,4; No Smoke, No Drink Club 2,3,4; Y-Teens 3,4; Monitor 3.

**CAROLE ELIZABETH EZELL**

Student Council 2,4; H.R. Pres. 3; Honor Society 4; Library Club 2,3,4, Lettered 4, Pres. Cabinet 4; Pep Club 2,3,4; Chorus 4; No Smoke, No Drink Club 2,3,4; Monitor 3,4.



**PATRICIA WADENE FARMER**

Y-Teens 2; Junior Achievement; No Smoke, No Drink Club 2,3,4; Bowling Club.

*1-20-67  
Pat died of cancer*

**BOBBY FERGUSON**  
Baseball 2; Chess Club 3.



**ANITA FIELDS**

Whitehaven High, Memphis 2; Pep Club 3; Red Cross 4; Diversified Occupations 4; Trade & Industry Club 4.



**RITA ANN FINNEY**

Prom Court 4; Prettiest Girl 4; H.R. Sec. 2,3,4; No Smoke, No Drink Club 2,3,4; Pep Club 2,3,4; Y-Teens 4; Future Homemakers 4; Monitor 2,3,4; Miss East High Contest 4.

**KENNETH RAY FORD**

Cooperative Training 3,4; Trade and Industry 3,4.



**DONALD FOX**

Football 2,3,4, Lettered 3,4; Baseball 2,3,4; No Smoke, No Drink Club 2,3,4; Red Cross 2,3,4.



**PATTY LOUISE FRANK**  
Madison High 2,3; Distributive Education 4, District D. E. Leadership Conference; Miss East High Contest 4; Prom Court 4.



**JOHNNY FREUND**  
Key Club 2,3,4; Thespians 4, V. Pres. 4; No Smoke, No Drink Club 2,3,4; Forensic League, 2,3; Bowling Club 2,3,4; Pep Club 4; Hi-Y 2,3,4; H.R. Pres. 2.



**HESTER FRYAR**  
Honor Society 3,4; Diversified Occupations 3,4; Trade and Industry Club 3,4.



**JIMMY FULLER**  
No Smoke, No Drink Club 2,3,4.



**MICHAEL FUQUA**  
Band 2,3,4, Lettered 2,3,4, Festival 3,4; Ensemble 2,3, Lettered 2; Junior Achievement 4; Bowling Club 4; Chess Club 2; Ski Club 2; French Club 2,3,4; Math Club 3,4; Breakfast Club 2,3;



**PATRICIA ANN GANN**  
Pep Club 3,4; No Smoke, No Drink Club 2,3,4; Breakfast Club 2,3,4.

*Died 2005 of cancer*

**BRENDA GANNON**  
West Leyden High 2,3.



**KENNETH GANT**  
Band 2,3,4; Christian Service Club 3,4.

**GAIL FRANCES GEIGER**  
Honor Society 3,4; Civinettes 4; Forensic League 2,3,4; No Smoke, No Drink Club 2,3,4; French Club 3; Future Teachers 2; Student Council.



**RAY GILL**  
Maplewood High 2,3; Bowling 4; Art 4.

*Died*



ALLEN GLEAVES  
Diversified Occupations 3,4;  
Trade and Industry Club 3,4.

SHERYL ROYCE GOFORTH  
Honor Society 4, V. Pres. 4;  
Library Club 2,3,4, Treas. 3,  
Lettered 3, Pres. 4, Middle Tenn.  
Convention 2,3; Art Club 2,3,4,  
Treas. 3, V. Pres. 4; No Smoke,  
No Drink Club 2,3,4; Pep Club 2;  
Vanderbilt Science Fair 4; Pres.  
Cabinet 3; Alternate to Girls'  
State 3; PTSA Representative; HR  
Treas. 2, V. Pres. 4; Civinettes 4;  
Annual Staff 4.



PAT GRANDMAISON  
Red Cross 3; Diversified Occu-  
pations 4; Trade and In-  
dustry Club 4; H. R. Reporter 4.

BILLY J. GREEN

Hi-Y 2,3, Pres. 2,3; Civitan 2,3;  
Ski Club 2,3,4; Rifle Team 2,3,4;  
Football 2,3,4; Lettered 4; Pep  
Club 2,3,4; Christian Service 4;  
Chorus 4; Track 4; Bowling 2;  
President's Cabinet 4.



KENNETH GREEN  
D.E. Club 4, V. Pres. 4; District  
D.E. Leadership Conference.



KENNETH W. GRIFFITH

Math Club 3,4; Library Club 2,3,4; Band 2,3,4; Lettered 3,4;  
Band Camp 2,3,4, No Smoke, No Drink Club 2,3,4.

SANDY KAY GROGAN

Red Cross Club 2,3,4; No Smoke, No Drink Club 2,3,4; Chorus 2,  
3.



MILTON RAY HAGER

Audio Visual Club 2,3, V. Pres. 3; Future Men of Medicine 2;  
Christian Service Club 3,4; Pres. 4; Latin Club 4; U.N. Work-  
shop 4.

ANDREA HAGEWOOD

Civinettes 4; Honor Society 3,4; Math Club 4; Pep Club 2,3,4; Y-  
Teens 3,4; Annual Staff 4; Spanish Club 3; Junior Achievement 4;  
Chorus 2,4.



LINDA JOYCE HALE

Red Cross 2; FBLA 3; Monitor  
2; Bowling Club 4; Art Club 4;  
Christian Service Club 4; No  
Smoke, No Drink Club 2; Chorus  
2,3,4; First Place West High  
Talent Show 4; Miss East High  
Contest 4.



LYNN HALE

French Club 2; FBLA 2,3,4;  
Sec. 2,3,4; Honor Society 3,4,  
Treas. 3; Civinettes 4; Pep  
Club 2; Chorus 2,3; Ensemble  
2,3; Miss East High Contest 4.

CHARLES HALL



ELIZABETH ANN HAMBRICK

Ski Club 2; Y-Teens 2,3,4; Pep  
Club 3,4.

CHARLES HAMILTON

Rifle Team 2,3,4, Lettered 2,3;  
Bowling Club 2,3; Car Club 2,3.



DIANNE HAMPTON

Art Club 2,3; No Smoke, No  
Drink Club 2,3,4; Clinic Staff 3,  
FBLA 3,4; Office Staff 4; Annual  
Typing Contest 3.



JAMES HARPER  
Audio-Visual 4.

BURMA MARIA HARRISON  
Y-Teens 2; F.H.A. 3,4.



ROSE MARIE HELLEN  
David Lipscomb 2.



JIMMIE DELOISE HESTER  
Red Cross 2; T&I 4; Cooperative Training Club 4.







**MAURICE HICKMAN**  
Bowling Club 2,3,4; No Smoke, No Drink Club 2.



**SHIRLEY JOYCE HILL**  
Pep Club 2,3,4; Red Cross 2,3; FBLA 4; No Smoke, No Drink Club 2,3,4; Archery Club 2.



**MYRON PAUL HINKLE**  
Ensemble 2,3, Lettered 2,4; Male Chorus 2,3,4; Civitan 3,4; D.E. Club 4, Reporter 4; Cross Country Team 3, Lettered 3; District D.E. Leadership Conference 3.



**MARY PAULETTE HINKLE**  
Christian Service Club 2; Y-Teens 2; Ensemble 2,3,4; Mass Chorus 2,3,4; NFL 4; Chorus Club 4; All-Star Chorus 2.

**KATIE HINSON**



**BOBBY WALTON HONEA**  
No Smoke, No Drink Club 2; Male Chorus 2.



**CAROLYN JANE HOOPER**  
Red Cross 2,3,4; D.O. 4; T&I Club 4.



**LINDA CAROL HUGHES**  
Y-Teens 2,3,4; Pep Club 2,3,4; Monitor 4; Chorus 2,3,4; Ensemble 2,3; Christian Service 2.



*11-28-06 passed away of cancer*  
**PAT HUBBARD JOHNSON**  
Pep Club 2,3,4.



**ROBERT HUGHES**  
Chess Club 2,3, Vice Pres. 3; D.O. 4; T&I Club 4; Football Manager 2; Basketball Manager 2; Track Manager 2.





SHARON ANN HUNT

Music Club 4; FBLA 3; No Smoke, No Drink Club 2,3,4.



SANDRA HURT

Y-Teens 2,3,4; Pep Club 2,3,4; Ski Club 2,3,4.



VIRGINIA ANN HUTCHISON

Pep Club 2,3,4; Y-Teens 2,4; No Smoke, No Drink Club 2,3,4; FBLA 2; Monitor 3; Girls' Track Team 3.



BELINDA JACKSON

Co-op Training Club 4; T&I Club 4.

ELIZABETH ANN JACKSON

Finalist Miss East High Contest 2; Y-Teens 2,3, Chaplain 3; Civinettes 4; Pep Club 2,3,4; Spanish Club 2,3, Treas. 3; Bowling 2; Cheerleader 3,4, Lettered 3,4; Ensemble 3, Lettered 3; Student Council 4, Chaplain 4; Cheerleading Clinic 3,4; Band Camp 2; Prom Decorating Committee 3.



CONNIE ANN JOHNSON

Red Cross Club 2,3; D.O. Club 4; T&I Club 4; Library Club 2.

*passed away*

RICHARD JOHNSON

Ski Club 2,3; Hi-Y 3; Art 4; Science 4, Pres. 4; Tennis 2, Lettered 2.



STEVE JOHNSON

Rifle Team 4.

DONNA LYNN JONES

Best All Round 2; Most Versatile 4; Pep Club 2,3,4; Bowling Club 2,3; Ski Club 2,3, Sec. 3; Student Council 2; Y-Teens 4; No Smoke, No Drink Club 2,3,4; Cheerleader, Alternate 4, Lettered 4, Cheerleading Clinic 4; Basketball 2; Class V. Pres. 2; Class Treas. 4; Student Court 4, Treas. 4.



JOHNNY JONES

Civitan 2,3,4, Pres. 4; Rifle Team 2,3,4, Capt. 3,4; Football 2,3,4, Co-Capt. 4; Most Valuable Player 3; Boys' State 3.

*Died in Vietnam*

**CAROL KAZIAN**

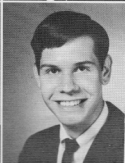
Pep Club 2,3; Monitor 3; FBLA 2,3; Art Club 4; Bowling Club 4.

**JOE MONROE KEEF**

Hi-Y 2, Chaplain 2; Bowling Club 4, V. Pres. 4; Key Club 4; Basketball 3,4; Lettered 3,4; Baseball 2,3,4, Lettered 2,3,4.

**DONALD WAYNE KELLY**

Ski Club 2; Key Club 4; Hi-Y 2,3; Bowling Club 2,3,4; Treas. 2,3,4; Rifle Club 2,3; Pep Club 3; Baseball 4, Lettered 4.

**JIMMY KENT**

Cross Country 2; Basketball 3; Civitan 4; President's Cabinet 4; Student Court 4; Honor Society 4; NFL 4; Monitor 4; Aud. Program Planning Committee 4; Pep Club 4; Bowling Club 4; Annual Staff 4; French Club 2, 3; Ensemble 3,4; Mass Chorus 3,4; Male Chorus 3,4; Thespians 3,4, Pres. 4; All Star Chorus 4; Tennis Team 4; Prom Decorating Committee 4; Red Cross 3,4.

*Died summer of 2000 of heart attack*

**JUANITA GAYLE KIRBY**

Glenciff 2,3; Chorus 4; Red Cross 4; Y-Teens 4.

**BOBBY KNIGHT**

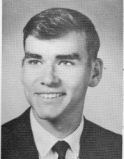
Christian Service Club 2; Civitans 2,3,4, Sec. 2; Bowling Club; Aud. Planning Committee 4; President Cabinet 2; Hi-Y 3; No Smoke, No Drink Club 2,3,4; Most Popular Boy 4; Willmaker 4; Pep Club 2,3,4; Pres. Soph. Class 2; Head Monitor 3; Pres. Student Body 4; TASC 3,4.

**ERNIE KNIGHT**

Chess Club 2,3,4, V. Pres. 4; Latin Club 4, Pres. 4; Honor Society 4; Band 2,3,4, Soph. Rep. 2, Senior Rep. 4; Senior Class Pres. 4; Chemistry Medal 3; Band Camp 2,3,4; Lettered in Band 2,3,4.

**DAVID LANE**

Chess Club 2,3,4, V. Pres. 4; Latin Club 4, Pres. 4; Honor Society 4; Band 2,3,4, Soph. Rep. 2, Senior Rep. 4; Senior Class Pres. 4; Chemistry Medal 3; Band Camp 2,3,4; Lettered in Band 2,3,4.

**BARBARA LASSITER**

Music Club 4; Band 2,3,4, Colorguard 3,4, Lettered 2,3,4; Tenn. All-State Band 3; Tenn. All-State Orchestra 4; Nash. Youth Orchestra 2,3,4, Sec. 4; West Side Orchestra 2,3,4; Band and Festival 2,3,4; Music Educator's National Conference 2.

**BUDDY LAWHORN**

Neatest Boy 4.



DAVID H. LEA  
Art Club 2,3; D.E. Club 4; D.E.  
Leadership Conference 4.



DEBBIE LEE  
Bowling Club 2,3, Sec.-Treas.  
3; Cheerleader 4; Pep Club 2,  
3,4; Y-Teens 3,4; Library Club  
2; Future Men of Medicine 2;  
No Smoke, No Drink Club 2,3,4;  
Student Council 3; Cheerleading  
Clinic 4.

GARY LEIGH  
Honor Society 3,4; Math Club 4.



LINDA LILLEY  
FBLA 2,3; Honor Society 3;  
D.E. Club 4; D.E. Leader-  
ship Conference 4;



KATHY MABRY  
FBLA 2, FTA 2,3,4; Pep Club 2,4.

PEGGY LEE MAGERS  
Y-Teens 3,4, Pres. 4; Pep Club 2,3,4; Civinettes 4; Ensemble  
2,3; Chorus 2,3,4; Annual Staff 4; Cheerleader 4, Alternate 3,  
Cheering Camp 3,4; Student Council 3; Castner-Knotts Fashion  
Board 4.



RONNIE MANNING  
French Club 2; FBLA 4; No Smoke, No Drink Club 2,3,4; Moni-  
tor 4; FBLA Convention 4.

LINDA GAYLE MASON  
Civinettes 4; Chorus 2,3,4; Student Council 2,3; Y-Teens 2,3,  
V. Pres. 4; Ensemble 2,3, Lettered 2; Pep Club 2; Annual Staff  
4.



*Killed in  
auto accident soon  
after graduation*

WAYNE MARTIN  
Honor Society 3,4; Math Club 4; Boys' Pep Club 2,3,4; Book-  
keeping Award Winner 3; Baseball 2,3,4, Lettered 3,4; Football  
2; Math Contest 3.

RICHARD A. MAYFIELD  
Math Club 3,4; Spanish Club 3; Career Club 2; No Smoke, No  
Drink Club 2,3,4.





MARTHA JANE McBROOM  
Library Club 2; Future Men of Medicine 2; French Club 3,4; Pep Club 4; Y-Teens 4.



HERBERT McCAWLEY  
D. E. Club 4; D. E. Leadership Conference 4.



MARION McCORD  
Honor Society 3,4; Civinettes 4, Sec. 4; Bowling Club 2,3; Pep Club 2,3,4; Biology Medal 2; Girls' State 3.



GARY McCRARY  
Key Club 3,4; Hi-Y 2, V. Pres. 2



BENNIE LEE McDONALD *died 1996 or 1997*  
Bowling Club 2,4, Pres. 4; Band 2,3,4, Lettered 2,3,4, Band Camp 2,3,4; Ensemble 3; Mass Chorus 3; Male Chorus 3; Lettered 3; Cross Country Team 2,3; Band Contest 3,4; Marching Contest 3,4; Choral Contest 3.



DONNA McINTYRE  
Pep Club 2,3; French Club 2; Bowling Club 2; Chorus 2,3; Ensemble 2,3; NFL 2,3,4, District Finals 3; NFL City Finals 2; Music Club 4; Finalist Miss East High Contest 2.

BUTCH McKINNON  
Civitan Club 2,3,4; Rifle Team 3,4; Football 2,3,4, Lettered 2,3,4; Basketball 2,3,4, Lettered 3,4; Golf 2,4; Baseball 2,3,4, Lettered 3,4; William Hume Award 3,4.



LINDA McKINNEY  
Bowling Club 2,3; Y-Teens 2,3; Pep Club 2,3; FBLA 3; D.E. Club 4; D.E. Leadership Conference 4.

SUE ANN McNEAL  
Math Club 2,3,4, Treas. 4; Pep Club 2; Honor Society 3,4; FBLA 3; Civinettes 4.



VERA FAYE MEADOR  
Chorus 2,3,4; Pep Club 2,4; No Smoke, No Drink Club 2,3,4; Y-Teens 4; Monitor 3.





JUANITA JEAN MEADOWS  
Home Ec. Club 4.



ROBERT MENCER  
Co-op Training Club 4; T&I Club 4.



KENNETH MERRILL  
Chorus 3,4; Christian Service Club 4; Guidance Dept. 4.



MICHAEL SHAYNE MERRILL  
Ski Club 2,3,4, Pres. 3,4; Rifle Team 3; Mass Chorus 3,4; Male  
Chorus 3,4; Bowling Club 3; Art Club 3,4; No Smoke, No Drink  
Club 2,3,4; Pep Club 3,4.



MARY MERRYMAN  
FBLA 2,3, Treas. 3; Art Club 4; Pep Club 2,3; Christian Serv-  
ice Club 4; Bowling Club 4; No Smoke, No Drink Club 2,3,4.



BILLY MESSER  
Bowling Club 2,3,4; Pep Club 4; Hi-Y 2.

ROBERT MILAM  
D.E. Club 4; D.E. Leadership  
Conference 4; T&I Club 4.



ELAINE MILLER



CONNIE ANN MITCHELL  
D.E. Club 4; D. E. Leadership  
Conference 4.



BETTY MOODY  
Pep Club 2,3,4; Basketball 2,  
3,4; Lettered 2,4, Capt. 4;  
Volleyball 2.



LILLIAN ELIZABETH MOORE  
Co-op Training Club 4; T&I  
Club 4; Maplewood 2.



MARILYN MORGAN  
Hillsboro 2,3; Bowling Team  
4.

LINDA GAYLE MOSS  
No Smoke, No Drink Club 2,3,  
4; FHA 3,4; Pres. 4; Y-Teens  
4.



PATSY MOSS  
Honor Society 3,4; T&I Club 4;  
FBLA 3; Christian Service  
Club 2,3,4, V. Pres. 4; D.O.  
Club 4; Pep Club 2,3; Red  
Cross 2; Band 2, Lettered 2.

VICKIE NASH



LINDA LEE NEAL  
Maplewood 2; Pep Club 3; FB-  
LA 3,4; Bowling Club 3,4; No  
Smoke, No Drink Club 2,3,4;  
2; UN Council 4; FBLA Con-  
vention 4.



STEVE ALLEN NICHOLS  
Bowling Club 2,3; Math Club 3; Hi-Y 2.

LYNDA JEAN OGLES  
No Smoke, No Drink Club 2,3,4; Pep Club 2,3,4; Y-Teens 2,3;  
Bowling Club 2; Cheerleader 3,4; Homecoming Court 2,3,4;  
Tennis 2,3.



JAMES DONALD O'KELLEY  
Bowling Club 2,3,4.

KATHY OLIVER  
Spanish Club 2,3; Library Club 2,3; Math Club 4; Civinettes 4;  
Y-Teens 2,3; Honor Society 3,4, Pres. 4; Pep Club 2,3; Ensemble  
3; Band 2,3,4, Lettered 2,3,4; Majorette 3,4; Miss East High  
4.



**DONNA JEAN OLPHE**  
 Soph. Prentiest Girl, Most  
 Versatile 2; Pep Club 2,3,4;  
 Ski Club 2; Honor Society 2,  
 3; Civinettes 4; Student  
 Council 2,3,4, Sec. 3,4; Eagle  
 Staff 3; Annual Staff 3; Bow-  
 ling Club 2; Thespian Socie-  
 ty 4; Girls' Basketball 2,3,  
 4, Co-Capt. 4; Volleyball 2,  
 3, 4; Tennis 2,3,4; Cheer-  
 leader 3,4, Capt. 4; Girls'  
 State 3; Homecoming Alt. 4;  
 Best All Round 4; Most School  
 Spirit 3; Cheering Clinic 3,4;  
 Prom Queen 4.



**VERNON HOLMES OVERALL**  
 Key Club 2,3,4, V.Pres. 4;  
 Student Court, Justice 4;  
 Football 2,3,4, Capt. 4; Track  
 2,3,4, Capt. 4; Class Pres. 3.

**CHARLES TONY PACK**  
 Bowling Club 2.



**SHERYL EVON PADGETT**  
 Pep Club 2,3; Y-Teens 4; No  
 Smoke, No Drink Club 2,3,4;  
 FHA 4; FBLA 2.

**SANDRA PACK**  
 Red Cross 3; Pep Club 4.



**CONNIE SUE PATE**  
 Honor Society 2,3,4; Span-  
 ish Club 2; Civinettes 4,  
 Treas. 4; FBLA, Reporter 3,  
 4; Pep Club 4; President's  
 Cabinet 4; Annual Staff 4;  
 Cheerleader 4; Cheerleading  
 Clinic 4.



**KERRY LYNN PATTERSON** *passed away*  
 Y-Teens 2,4; Pep Club 4; Music Club 3.

**BECKY PAYNE** *passed away*  
 Honor Society 3,4; Annual Staff 4; Y-Teens 2,4; Pep Club 2,3,4;  
 Bowling Club 3; French Club 2; Monitor 3; Homeroom Sec. 2, 3;  
 Forensic Club 2.



*passed  
 away  
 1-17-69 in  
 Dallas, Tx.  
 after battling  
 cancer for 10  
 yrs*



**RONNIE PHILLIPS**  
 Ski Club 2; Christian Service Club 4; Band Camp 2,3,4, Counse-  
 lor 4; FTA 2.

*passed away*

**TOMMY PIRTLE**





**ROBERT WAYNE POMEROY**  
Bowling Club 2; Civitan Club 4; D.E. Club 4; Homeroom Pres. 3;  
Football 3, Lettered 3; Tennis 2,3, Lettered 2,3; D.E. Leadership  
Conference 4.



**LOVIE ANN PRYOR**  
Pep Club 2,3; FBLA 2,3; Red Cross 3; Art Club 4; Christian  
Service Club 4; UN Workshop 4.



**DOUG PURYEAR**  
No Smoke, No Drink Club 2,3; Football, Lettered 4; Track 3,4.



**ROSEMARY QUINN**  
French Club 2; Pep Club 2; D.O. Club 3,4; T&I Club 3,4, V.Pres.  
Mid. Tenn. 3; Honor Society 3,4; Student Council 4; Eagle Rep.3;  
T&I Convention 3,4.

**JERRY WAYNE RAGAN**  
Library Club 3,4; Car Club 2,  
3, Treas. 3; D.O. Club 4;  
T&I Club 4; No Smoke, No  
Drink Club 2,3,4; Student  
Library Assistants Con-  
vention 3.



**MIKE RAINEY**  
Hi-Y 3; Chorus 3,4.

*passed away*

**JOHN C. RAMSEY**  
Key Club 4; Basketball 3,4,  
Lettered 3,4; Baseball 3,4,  
Lettered 3,4; Golf 3,  
Lettered 3.



**BOBBY RAYMER**  
D.O. Club 4; T&I Club 4.

**JEANNELLE RAYMER**  
FBLA 2; Y-Teens 3; T&I  
Club 3,4; D.O. Club 3,4.



**SHARON SUE REDING**  
Y-Teens 2; Honor Society 3,  
4; Spanish Club 2,3, Sec. 4;  
Annual Staff 4; Monitor 4;  
Homecoming Queen 4; Clinic  
Bowl Representative 4.



**ANN RICHARDSON**  
Pep Club 4; Y-Teens 4; Bowling Club 4; Chorus 4.



**NEAL RICHARDSON**  
Art Club 2,3,4, Pres. 4; Ski Club 2; Chess Club 4; Cross Country 2; Rifle Team 4; Industrial Arts Award 3.



**SANDRA RICHESON**  
French Club 2; Bowling Club 3; Pep Club 3,4; Math Club 4.



**PATRICIA RIEGEL**  
Pep Club 2,3,4; FBLA 2,3; Chorus 2,4; Christian Service Club 3,4, Sec.-Treas. 4; Library Club 2,4.

**SANDRA KAYE RIPPY**

Ski Club 2,3; Pep Club 2,3,4, Sec. 4; Y-Teens 2,3,4; Bowling Club 2; No Smoke, No Drink Club 2; Chorus 2,3,4; Monitor 2,3; Office Staff 4; Homeroom Sec. 2,3; Thespian Society 4, Clerk 4.

*passed away of brain cancer*



**LINDA DEANNE ROBINSON**  
Red Cross 2; FBLA 2,4; No Smoke, No Drink Club 2,3,4; Pep Club 2,3,4; All State Chorus 4; All Star Chorus 4; Chorus 2,3,4.



**LARRY ROBINSON**

Audio Visual Club 3; D.E. Club 4; District D.E. Leadership Conference 4.



**K. DIANNE SADLER**  
Pep Club 2,3,4; No Smoke, No Drink Club 2,3,4; Band 2; Y-Teens 2,3,4; Monitor 3; Chorus 2,3,4; All State and All Star Chorus 4; Bowling 4; J A 3,4; FBLA Convention 4.

*passed away*



**CAROL SCHEUZERMAN**

NFL 2,3,4; Bowling Club 3,4; J A 3,4, Treas. 3; T&I Club 4; D.O. 4; No Smoke, No Drink Club 2,3,4; Miss East High High 2; Junior Miss Contest 4; Miss J A Contest 3.



**DIANA LYNN SCHOONOVER**  
D.E. Club 4; D.E. Leadership Conference 4; Knoxville Fulton High, Loudon High Tenn. 3,2.







LINDA RUTH SMITH  
Pep Club 2,3,4; Y-Teens;  
Ski Club.

PEGGIE SUE SMITH  
Pep Club 4; Future Men of  
Medicine 2.



PATSY DAWN SPAIN  
FBLA 2,3; No Smoke, No Drink  
Drink Club 2,3,4; Y-Teens  
3.4; Pep Club 3.4.



JUDY CHARLENE SPEARS  
Red Cross 2; Guidance 4; Y-Teens 3,4; Pep Club 3,4; Career  
Club 2; Bowling Club 2.

SHARON ANN SPELTA  
Y-Teens 2,3,4; Ski Club 2,3; Mass Chorus 2,3,4; Pep Club 2,3,  
4; Cheerleader 4; Bowling Club 2; Daintest Girl 4; Treas. Pep  
Club 4; Cheerleading Clinic 4.



MICHAEL WAYNE STARGEL  
Library Club 2,3; Chess Club 3,4; PTSA 2,3,4.

DALE STEPHENS

*3-30-68  
passed away*



DARLENE FAY STEVENS  
Y-Teens 2,3; Library Club 3,4; Pep Club 2; D.E. 4, Treas. 4;  
D.E. District Leadership Conference 4; State D.E. Leadership  
Convention 4.

BUTCH STEWART  
Key Club 2,3,4, Pres. 4; Bowling Club 4; Basketball 2,3,4,  
Lettered 2,3,4; Football 3,4; Track 2,3,4, Captain 4; Cross  
Country 2,3,4, Captain 4; Student Council 2,3,4; Most Hand-  
some Boy 4; Head Monitor Nom. 4; Prom Committee 2,3;  
Chorus 2,3,4.



ERROL STILES



RONNIE STILZ  
Civitan Club 4; Basball 3;  
Football 2,4; Senior Class  
V. Pres. 4.

ERNIE TAYLOR



JANIE RANELLE TAYLOR  
Manual High, Peoria, Ill. 2,  
3.



SHERRIE TEMPLE

Pep Club 2,3; No Smoke, No Drink Club 2,3; Chorus 2,3,4; Monitor 3; Christian Service Club 4; Homeroom President 4.



PATRICIA FAYE TOMLINSON

Library Club 2; Ski Club 3,4; Mass Chorus 3,4; Pep Club 4; No Smoke, No Drink Club 2,3,4; Art Club 4.



ROGER TURNBOW

Math Club 3,4, V. Pres. 4; Chess Club 2,3,4, V. Pres. 3, Pres. 4; French Club 3,4, Pres. 4; Rifle Team 2,3; NFL 2,3,4; Thespian Society 4; Band 2,3,4, Lettered 2,3,4; Junior Achievement 3,4, Pres. Of Company 3,4, V. Pres. of Association 4; National Convention 3; Business Manager Annual Staff 4; Homeroom Pres. 3; Breakfast Club 2,3.



GERALDINE TURNER

Pep Club 2,3; Future Men of Medicine 2; Y-Teens 3.

*passed away*



JAMES "JIM" EDWARD UNDERWOOD

Student Council 3; Spanish Club 3,4.



PEGGY ANN VASSAR

Red Cross 2,3; No Smoke, No Drink Club 2,3.



VIVIAN WALLACE

DOROTHY LA-FAYE WATTS  
Red Cross 2,3; Y-Teens 2; D.E. Club 4.



SANDRA WEAVER  
Moore County High School, Lynchburg, Tenn. 2,3; Red Cross 4.

GLENDAY WEBSTER  
FBLA 4; T&I Club 4; D. O. Club 4; Office Staff 4.



JAN ELAINE WELLS  
Pep Club 3; T&I Club 4; D. O. Club 4; Bowling Club 2; Y-Teens 2.

JOHN WILLIAM WESTFIELD III  
Student Court 3; Hi-Y 2,3; Sec-Treas. 3; East Eangle 2,3,4, Bus.  
Mgr. 3, Editor 4; Civitans 3,4, Chap. 4; Math Club 4; NFL 2,3,4,  
V. Pres. 3; Nominee, Student Body Pres. 3; Class Grumbler 4;  
U.T. Journalism Institute 2; Tenn. High School Press Assoc. 3.



DONALD WHEELER  
Christian Service Club 2;  
Cross Country Team 2.

*passed away*



LINDA WHEELER

JERRY DEAN WHITE  
Car Club 2; Christian Serv-  
ice Club 3.



CHARLES WILLIAMS  
Chess Club 2; D.O. 3,4; T&I  
Club 3,4; Mu Alpha Theta 4;  
T&I District Meet 3, Third  
in Public Speaking.



TERRY WILLIAMS

Forensic Club 2; All Star Band 2; Band 2,3,4; Honor Society 3, 4; Student Council 4; All State Orchestra 4; City Finals in Humorous Reading 2, Student Conductor (band) 4; Band Pres. 4.



JIMMY WILSON

D. E. Club 4; District D. E. Leadership Conference 4.

*passed away*



JIMMY WILSON

French Club 2; D. O. Club 4; Civitan 2,3,4; Math Club 3; T&I Club 4; No Smoke, No Drink Club 2,3,4; Christian Service Club 2,3; Student Council 2.



SUZI WINGATE

Pep Club 2,3; Honor Society 3,4; Civinettes 4; Math Club 3,4, Sec. 4; NFL 2,3,4; City Finals 2; Math Contest 2,3; Southern Speech Assoc. & Tourn. 2; UN Seminar 4.



GREGORY M. WOOD

Ski Club 2; Spanish Club 2; No Smoke, No Drink Club 2,3,4; Male Chorus 3; Mass Chorus 3; Hall Monitor 4; Art Club 4; Bowling Club 4; Christian Service Club 4; Cross Country 2; B Team Basketball 2; Track 2; Tennis 2,3,4, Lettered 2,3,4; Captain, Tennis 4.



NANCY WOODY

Library Club 2; NFL 2,3; FBLA 2,3,4; Bowling Club 3; Pep Club 2,3; Music Club 4; Math Club 4; Ensemble 2,3, Lettered 2, 3; French Club 2,3; Chorus 3; Quizbusters 2,4; Civinettes 4, V. Pres. 4; Eagle Staff 2,3; Annual Staff 4; Quill and Scroll 3,4; Honor Society 4; Choral Festivals 2,3,4; Class Historian 4; Student Council 2,4; Homeroom Sec. 2; UT Journalism Institute 2; TSPA Convention 3; MT Library Convention 2; MTVA Solo Ensemble 2; Southern Speech Assoc. 2; Youth Incorporated GSMT 3; Girls' State Alt. 3.



JAMES "BO" WRIGHT

No Smoke, No Drink Club 2,3,4; Bowling Club 3; Rifle Club 3,4; Friendliest Boy 4; Male Chorus 3,4; Mass Chorus 3,4; Pep Club 3,4.

Jerry Bland  
Wendell Conner  
Tommy Dobbs  
Leslie Fuller  
Donald H. Hankins  
James Edward Harrell  
James Hicks

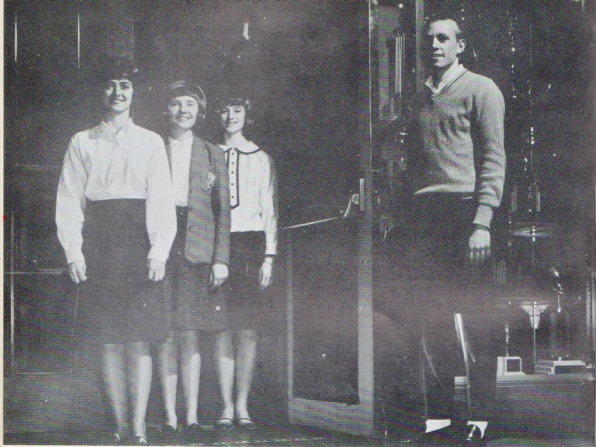
NOT PICTURED

Kenneth Hinkle  
Dickie Jones  
Robert Lewis Kephart  
Robert Lane  
Michael David Mason  
Eugene Butch McWilliams

Earl Melton  
Jim Norris  
Joyce Ann Stafford  
Donald Sullens - *class 2003*  
Donnie Tillman  
Gail Williams

The hand of friendship will be extended many times to these seniors who have now finished their twelve years of schooling.





JUNIOR CLASS OFFICERS: Pat Shaffer, Vice-President; Linda Graves, Secretary; Evelyn Sweeney, Treasurer; G. C. Jenkins, President.

## THE JUNIOR CLASS

The eleventh graders at East High School could certainly have been known as the "Jolly Juniors." They had neither the problems of adjusting to a new school nor the worries brought on by the pressures of the senior year. Thus they could simply enjoy their school days.

The juniors were active in all different types of organi-

zations and projects. They held many club offices, gained additional skills in athletics, and often excelled in their studies. These many varied experiences have helped prepare them for the responsibilities they will have as seniors next year. The graduating seniors of this year certainly have confidence in the future of their school as they leave it in the hands of the Class of 1966.



Jane Allbritton  
 Frank Allen  
 Sandra Allen  
 Brenda Sue Alley  
 Roy Anderson



Vivian Anderson  
 Clark Angell  
 Lealand Annes  
 Virginia Ashworth  
 Sharon Baggett



Wanda Ball  
 Deanna Sue Bass  
 Richard Bawcom  
 Marcia Beard  
 Patricia Beene

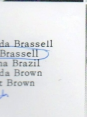
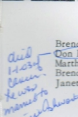


Carmaleatta Benton  
 Polly Berry  
 Larry Biggs  
 Donna Binkley  
 Linda Binkley



*suicide*

Larry Blackburn  
 Linda Blanton  
 Howard Bledsoe  
Randall Bobbitt  
 Jimmy Bradford



Brenda Brassell  
Don Brassell  
 Martha Brazil  
 Brenda Brown  
 Janet Brown

*acid  
 1-4-63  
 Brown  
 he was  
 married to  
 Virginia Ashworth*

Patsy Brown  
 Ronnie Brown  
 David Bruce  
 John Bryan  
 Diana Bryant





Leonard Bullion  
Brenda Byrum  
Dianne Calvert  
Linda Campbell  
Ruth Carden



Lois Carpenter  
Judy Carr  
Jo Ann Carter  
Steve Cavnar  
Franklin Chance



Jo Ellen Chandler  
Sherry Charlton  
Lana Childress  
Sandra Clarke  
Donna Clegg



Patricia Clegg  
Charles Cleveland  
Jane Coffee  
Jean Cole  
Ann Coleman *did in auto accident*



Kathy Collier  
Doug Collins  
Wayne Collins  
Tommy Combs  
Tommy Conquest



James Costello  
Jim Craighead  
Cathy Crawford  
Buddy Curran  
Joan Davenport



Johnny Davenport  
Alice Davis  
James Davis  
Richard Delk  
John Dickens



Ronald Doggett  
 Brenda Duke  
 James Duncan  
 Charles Edwards  
 Marilyn Epperly

*Cheryl  
 died  
 10-4-60  
 of heart  
 attack*



Carol Evans  
 Pat Ferguson  
 Harold Finchum  
 William Fisher  
 Linda Ferrell



Linda Flatt  
 Jerry Ford  
 Diane Fuller  
 Patricia Gaines  
 Jerry Gaitan



John Gammon  
 Patricia Gibson  
 Judy Gifford  
 John Gilbert  
 Diane Gains



Linda Graves  
 Mike Greenfield  
 Cheryl Gregory  
 Ernest Gregory  
 Janie Gregory

Larry Gregory  
 David Griffin  
 Gayle Griffin  
 Don Grubbs  
 Deborah Hackett



Sharon Hager  
 Danny Hall  
 Randy Hall  
 Joe Hampton  
 Billy Harrington





Kathy Harrigan  
 Grace Hatcher  
 Margie Hatcher  
 Frank Hayes  
 Lillian Hendricks



Barbara Hester  
 Jerry Hibdon  
 Vernon Holland  
 Danny Holloman  
 Frances Holt

Sue Hooper  
 Wanda Horner  
 Gayle House  
 Linda Gail Howell  
 Gary Hudgens



Linda Ireland  
 Cathy Jenkins  
 G. C. Jenkins  
 Alice Jennette  
 Dickie Jones



Richard Jones  
 Dwayne Jordon  
 Pat Judkins  
 Richard Judkins  
 Carl Kimble



Jerry Kimbrough  
 Pam Kittrell  
 Prentice Lamberth  
 Donna Lane  
 Evelyn Lifsey



Kathy Lincoln  
 Robert Lockhart  
 Gail Loftis  
 Billy Lovell  
 Donald Manley

Dawn Mauck  
 Jerry Maynard  
 Mary McBroom  
 Janice McCloud  
 Mary Ann McCloud



Clyde McCormick  
 Sue McGlothlin  
 Mary Ann McIntyre  
 Faye McNeal  
 Steve McPherson



Robert Melin  
 Suzette Milam  
 Linda Mitchell  
 Rebecca Mitchell  
 Shirley Moran



Phyllis Morgan  
 Nellie Louise Mount  
 Tommy Nokes  
 Andy Norris  
 Jenny Osborne



Tommy Owen  
 Becky Patterson  
 Jackie Patton  
 Marion Peden  
 Bill Pelfrey

Sharlena Phillips  
 Linda Pendergrass  
 Larry Pitts  
 James Plunk  
 Linda Porter



Larry Prince  
 Nathan Proctor  
 Martha Reed  
 Randy Reed  
 Darlene Reese





Faye Reese  
James Reid  
Wayne Richards  
Charles Richeson  
Richard Roach



Robbie Robertson  
Brenda Robinson  
Wilma Robinson  
Barbara Robson  
Jimmy Rogers

Wesley Ross  
Charlene Russell  
Barry St. John  
Gail Sanders  
Wayne Sawyer



Maxine Schlosser  
Lester Self  
Jerry Shadix  
Frankie Shadrick  
Patricia Shaffer



Danny Sherrod  
Linda Short  
Paul Simmons  
Richard Slayman  
Clude Sloan



Billy Smith  
Patricia Smith  
Peggie Smith  
Sherrie Smith  
Linda Sneed



Billy Stanley  
William Stroud  
Evelyn Sweeney  
Sharon Talbert  
James Tallent



Richard Thrower  
Chris Tiedt  
Rachel Travis  
Ann Trousdale  
Judy Twilley



Sandra Wagerman  
Jerry Wakefield  
Leon Warren  
Brenda Watson  
Bill Wedekind



Sue Wells  
Sarah Williams  
Amanda Willis  
Barbara Wilson  
Helen Wilson



Jerry Windsor  
Mike Windsor  
Bobby Wright  
Pat Wright - *child of com.*  
Carol Wrye



Nannette Young  
John Bruce  
Martha Lovelace

NOT PICTURED

Joyce Adams  
Bobby Berry  
Wayne Bolton  
Linda Cox - *child*  
Kathy Cox  
Becky Craighead  
Suzanne Downey  
Steve Holliday  
Rebecca Hyde  
Carlton Liptford  
Robert Melvin

Dennis Morgan  
Deborah Norris  
Peggy Patterson  
Larry Patton  
Jerry Prescott  
Shirley Jo Randolph  
Robert Satterfield  
Michael Self  
Jerry Sullivan  
Carolyn Wann



Cheerleaders pep up the spirit of the students during a basketball game on the floor of our gymnasium.





SOPHOMORE CLASS OFFICERS: Pat Skipper, Secretary; Carol Jackson, President; Terry Davidson, Treasurer; Charlie Edens, V-President.

## THE SOPHOMORE CLASS

The sophomores have now completed their first year at East High School. When they first arrived, they found a school with many traditions left by students of past years, yet a school that was open for new ideas from students of the present and the future. They met many friends of their junior high years, and they made lots of new acquaintances. Several phases of school

life were familiar to them, but others were new and puzzling experiences.

These sophomores have grown used to their school after this first year. They are now ready to welcome a new class of sophomores and to contribute their part to the traditions of East High.

Johnny Adairs  
Roy Adcock  
Charlene Alford  
Betty Jo Allen  
David Allen  
William G. Allen



Sherry Alverson  
Judy Gail Anderson  
Dianne Andrews  
Geraldine Anglin  
Gary Arnold  
Delores Arrant



Kenneth Baker  
Brenda Beene  
Mary Ann Belcher  
Melvin Belcher  
Patricia Bertram  
Marie Binkley



Brenda Blackmore  
Maureen Bogle  
Betty Bolton  
Mary Lou Bolton  
Patricia Bond  
Tommy Bonds



Cecile Booher  
John Bowers  
Ricky Bowers  
Thomas Bowman  
Dennis Brady  
Judith Brandon



Patsy Bowser  
Sandra Brooks  
Brenda Brown  
Edwin Brown  
Trell Brown  
Bob Bruce



Donna Bruce  
Charles Blummitt  
Linda Buchanan  
Evie Lou Burdette  
Donna Burgett  
Mary Lou Burke



Betty Ann Busby  
Jackie Calvert  
Faye Campbell  
Kenneth Canter  
Reba Carney  
Minka Casey







Kenneth Chandler  
 Larry Chaney  
 Lee Chastain  
 Betty Lou Chester  
 Wayne Childress  
 David Chitwood



Eddie Chitwood  
 David Clark  
 Vickie Clark  
 Steve Clements  
 Susan Collins  
 Randall Conner



Brenda Cooper  
 Shelia Covington  
 Doris Craig  
 Shirline Cripps  
 Kathy Crosby  
 Pam Davenport



Terry Davidson  
 Barbara Davis  
 Joy Davis  
 Jackie Davis  
 Linda Davis  
 Elaine Davis



Sherry Davis  
 Tony DePasquo  
 Patricia Dickens  
 Dianne Duke  
 Kenneth Duke  
 Charles Dukes



Betty Duncil  
 John Eaker  
 Dianne Earheart  
 Linda Eddings  
 Charles Edens  
 Brenda Edwards



Roger Eler  
 Gail Elmore  
 Ray Elrod  
 Claudia Engel  
 Linda Estes  
 Peggy Farmer



Peggy Farmer  
 Clifford Fayse  
 Larry Ford  
 Vickie Fort  
 Tommy Foust  
 Marilyn Freeman

Tommy Fryer  
 Thomas Fuller  
 Vicki Fuller  
 Betty Fulton  
 Sammy Gaddis  
 Glenda Gailbreath



Bonnie Gainer  
 Peggy Gann  
 Margo Gentry  
 Marie Geralds  
 Linda Glasgow  
 Billie Goodwin



Brenda Goostree  
 Cathy Graves  
 Jean Graves  
 Mary Gray  
 Charles Gregory  
 Dorothy Gregory



Lynda Grooms  
 Gary Guy  
 Judy Haar  
 Brenda Hackett  
 Steve Hall  
 James Harbin



Sheila Harris  
 Barbara Harvey  
 Linda Hatcher  
 Cathy Hawkins  
 Sarah Hawkins  
 Terry Heald



David Henderson  
 Gail Henley  
 Robbie Hesson  
 David Hill  
 Jackie Hinkle  
 Johnny Hogan



Jerry Holcomb  
 Gary Holland  
 Peggy Hollars  
 Sandra Holt  
 Frank Horne  
 Sandra House



Robert Huff  
 Ronnie Huff  
 John Humphrey  
 George Hurst  
 Carol Jackson  
 Diane Jenkins





Nancy Jenkins  
Joyce Jennings  
Debbie Johnson  
Kathy Johnson  
Larry Johnson  
Diane Jones



Peggy Jones  
Peggy Jones  
Ted Judkins  
Mike Keef  
Jamie Keith  
Kenny Kellogg



Mary Ann Kempf  
Donald Kenton  
Wayne King  
Patricia Kirkland  
Jimmy Kettrell  
Carol Knox



Karen Krugh  
Peggy Lance  
Danny Lea  
John Little  
Mary Gene Logue  
Dora Lokey



Ricky Lott  
Rebecca Mabry  
Beverly Malone  
Glenn Manley  
Marion Martin  
Richard Martin



Elaine Mathis  
Dixie Matthews  
Faye Mayfield  
Andy Mayton  
Robert McClearn  
Brenda McCool



Stasley McCormick  
Stephen McCormick  
Carolyn McCreary  
Eugene McElhiney  
Ronald McMurty  
William McMurty



Linda McNeil  
David Meador  
Judy Meadows  
Ona Lee Meadows  
Nona Mencer  
Nellie Messer

Mike Miles  
David Milsap  
Barbara Miller  
Larry Mitchell  
Raymond Mockmore  
Cathy Monday



Larry Moore  
Charles Moran  
Pamela Moran  
Johnny Morris  
Donna Morrison  
Gayle Morrison



Madonna Morrison  
Patricia Neal  
Allen Neville  
Debbie Newton  
Betty Newton  
Jerry Norman



Paul Norris  
Johanna Olphie  
Joan Owen  
Wayne Owens  
Linda Pack  
Teresa Parlon



Steve Parrish  
Wayne Parsley  
Drake Pasayan  
Mike Patterson  
Linda Payne  
J. L. Perry



Judy Peterson  
Maerene Penze  
Cherrie Phillips  
Pam Pickard  
Sharon Pirtle  
Wanda Pirtle



William Pirtle  
Gary Pomeroy  
Wayne Powell  
Nancy Price  
Teresa Pulley  
Tommy Pursell



Robert Ramsey  
Dee Read  
Cheryl Reid  
Michael Reid  
Belinda Ricker  
Harold Riley





Sandra Rippy  
Daniel Roach  
Kay Robinson  
Jeanne Robinette  
Will Robinson  
Ronnie Rogers



Margaret Kose  
Dianne Rucker  
Lawrence Ruth  
Joe Sanders  
Sandra Sanders  
Leslie Sandlin



David Satterfield  
James Scott  
Lorena Scott  
Robert Sewell  
Rita Shelton  
Richard Sircy



Inez Sisco  
Patricia Skipper  
Joyce Sloan  
John Smith  
Nancy Smith  
Robert Spelta



Brenda Spencer  
Kenneth Spurlock  
Georgia Stafford  
Charles Stanley  
Veronica Staudt  
Nancy Stephens



David Stilz  
Billy Stilz  
Brenda Stolz  
David Stout  
Joyce Stout  
Jimmy Stovall



W. E. Sullivan  
Danny Talley  
Wally Taylor  
Shearon Thompson  
Vickie Thompson  
Tommy Tidmore



Barbara Tillman  
Pam Tillman  
Diane Timbs  
Virginia Tucker  
Jackie Turner  
Martha Tuttle



Carolyn Vaughn  
 Joe Vaughn  
 Kay Waldron  
 Ronnie Walker  
 Batsy Walters  
 Andy Watson



John Weatherly  
 Nelda Weaver  
 Ray Webster  
 Jean Wellborn  
 Steve Westfield  
 Linda Whited



Clinton Whitley  
 Carolyn Williams  
 Gary Williams  
 Betty Wilson  
 Bobby Wilson  
 Charles Wood



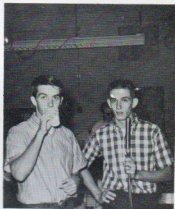
Judy Wright  
 Diane Young  
 Gary Young



NOT PICTURED:

Johnny Alvin  
 Billy Bird  
 Judy Brewer  
 Georgia Buchanan  
 Randell Cannon  
 Carol Diane Carney  
 William Caruthers  
 Cynthia Clark  
 Charles Cotner  
 James B. Cox  
 Roger Dale  
 Charles D. Escue  
 Bonnie Gooner  
 Donnie Hamlett  
 Karen Suzan Hugh  
 Shirley Hurst  
 Clyde Hurt  
 Ray Jackson  
 Patricia Jeanette  
 Elaine Johnson

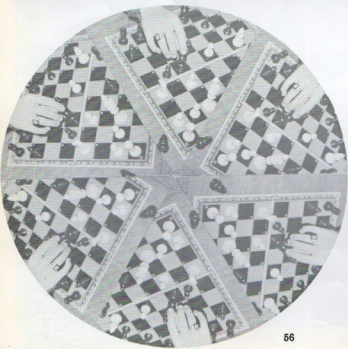
Thomas Lambert  
 Rebecca Mabry  
 Sherrie Medlin  
 Brenda Pentecost  
 Kenneth Powell  
 Louise Price  
 Kathy Rawls  
 Freddy Scarbrough  
 David Stamps  
 James Stewart  
 Sue Anne Stone  
 Don Taylor  
 Clifford Tayse  
 Wayne Wallace  
 Shirley Weaver  
 Betty West  
 Wilford Williams  
 Carolyn Williamson  
 Millard Wilson  
 Wayne Winter



Butch Stewart and Bobby Knight, emcee at the Sophomore Party.

Vickie Ford and Lee Chastain, winner of the dance contest.









## ORGANIZATIONS

Parties, initiations, and contests, all are a part of the kaleidoscope of East High. It was these groups and clubs which enabled students to work and plan together, and most important, to learn to know and understand others.

These clubs, perhaps more than any other phase of high school life, have prepared leaders--those students who will play a major role in the future.

Now this is over, and the 'little things' become large as we look back with no small pain on things that can never return to us again...a bruised knee from that hideous initiation in the cafeteria, or sore feet from those long parade marches.

Gone, but not forgotten, these dreams will live in the hearts of East High Eagles.



Frank Hayes, Head Monitor; Bobby Knight, President; Brenda Edens, Vice-President.

## STUDENT BODY OFFICERS

Every year in early April, the students at East become aware of the rapidly increasing number of signs in the halls, the cafeteria, the drinking fountains, and a few other startling places. These are a part of the intensive campaigning that comes before the election of Student Body Officers. After listening to serious speeches and humorous skits, the students cast their ballots on regulation voting machines for Student Body President, Vice-President, and Head Monitor for the

following year. There are three candidates for each office.

The officers' duties are many. The President helps plan assembly programs and presides at all meetings, assemblies, programs, etc. in the auditorium. The Vice-President serves as president of the Student Council, and the Head Monitor is in charge of the monitor system.



Selected from each of the three classes, the members of the Student Court hear instances of broken rules and decide on punishments if a student is found guilty. Although the Court is not responsible for all punishment in the school, it is a valuable part of our student government system.

STUDENT COURT: D. Rucker; R. Roach; J. Brown; L. Boyd; J. Kent, Assistant Justice; V. Overall, Chief Justice.

## STUDENT COURT

## PRESIDENT'S CABINET

PRESIDENT'S CABINET: B. Green; V. Overall; C. Pate; C. Ezell; D. Lee; B. Knight, President. STANDING: B. Stewart; F. Hayes; J. Kent, Assistant President.

The members of the Cabinet, just as in the United States' government, assist the President in his duties. Some of the areas they represent are the cafeteria, the Court, the library, the monitor system, and several others.



## STUDENT COUNCIL

Another active and successful year was scored by East's Student Council. Money was raised by several dances (Homecoming, Christmas, and Valentine's Day) and a few other projects to help finance a new sign for the campus in the future. The Council members, elected from their homerooms, also took part in "Shine-'N-Spark Week" held the first part of April. This week had several purposes, two of which were to increase school loyalty and show our appreciation for our teachers.



**STUDENT COUNCIL**—SEATED: E. Cathey; B. Knight; S. Cavanar, Sergeant at Arms; C. Edens, President Pr. Tem.; B. Edens, President; E. Jackson, Chaplain; B. Stewart; F. Hayes; T. Williams; D. Olfie, (not pictured, Secretary).  
**SECOND ROW:** R. Quinn; N. Weaver, L. Chaistain; B. Garner; B. Fisher; S. Casey; S. Baggett; C. Stanley; R. Rockmore; S. Smith; C. Ezell; P. Kittrell; Rawls; Sponsor; N. Woody; E. McWilliams; P. Shaffer; G. Pomeroy; L. Graves; L. Biggs.

## MONITORS

When first coming to East, every student immediately notices certain boys and girls stationed at various places throughout the halls. These students are monitors—their purpose is to keep stray students out of the corridors during class periods. If caught without a hall pass from a teacher, the guilty student is subject to punishment from Mr. Martin or the Student Court.



**MONITORS**—FRONT ROW: F. Hayes, Head Monitor; Smith, Sponsor. **SECOND ROW:** D. Mayfield; L. Flatt; J. Gammon. **THIRD ROW:** S. Williams; G. Griffin; J. Anderson; W. Martin; S. Reding. **FOURTH ROW:** G. Woods; C. Ezell; D. Griffin; R. Bawcum; J. Kent; L. Ireland; S. Smith. **FIFTH ROW:** E. Crowder; J. Gifford; B. Beene; L. Mason; R. Finney; S. Richeson; L. Biggs; L. Gregory; B. Wedekind. **SIXTH ROW:** C. Edens, D. Newlon; W. Ashburn; P. Bellas; R. Manning; L. Johnson; R. Bobbitt; L. Boyd; J. Kimbrough; B. Sewell; M. Greenfield.



## NAT THE

To be adm...  
 The parts...  
 secured a...  
 points. The...  
 by public app...





Kathy Oliver, President  
Sheryl Goforth, Vice-President  
Emily Crowder, Secretary-Treasurer

# HONOR SOCIETY



Mary Jane Batey  
Larry Boyd  
Diane Bruce  
Steve Bumbalough  
Starr Casey  
Linda Conquest  
Linda Craus



Beenda Dixon  
Gayle Drennan  
Nancy Eaker  
Pat Edens  
Carole Ezell  
Gail Geiger  
Andrea Hagewood



Lynn Hale  
Jimmy Kent  
David Lane  
Gary Leigh  
Wayne Martin  
Marion McCord  
Sue McNeal



Patsy Moss  
Connie Pate  
Becky Payne  
Rosemary Quinn  
Sharon Reding  
Terry Williams  
Suzi Wingate



Nancy Woody  
Donna Binkley  
Marilyn Epperley  
Judy Gifford  
Frank Hayes  
Jenny Osborne  
Linda Short  
Hester Fryar (not pictured)

## NATIONAL THESPIANS

An average of 92 or above is necessary for all members of the National Honor Society. These students held a formal initiation during activity period one morning where all new members were presented with their membership card and a pin. In addition, the Honor Society, under the direction of Mr. Crews, had a few guest speakers at their monthly meetings. The graduating members of this Society were entitled to have gold tassels and to have gold cords on their gowns at graduation.

To be admitted to the National Thespians, a student must have earned a certain number of points. These points are gained by public appearances in skits

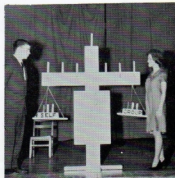
and plays. Mrs. Hendrick, the sponsor of this organization, helps these students get dramatic experience by presenting plays for the student body.



Jimmy Kent, President  
Johnny Freund, Vice-President  
Marilyn Epperley, Secretary  
Barbara Rippy, Recorder



Donna Lane  
Donna Olphie  
Roger Turnbow  
Becky Craighead (not pictured)







ANNUAL STAFF—SEATED; S. Casey; B. Stewart; N. Eaker, Editor; J. Osborne, Assistant Editor; J. Kent, SECOND ROW: A. Hagwood; E. Crowder; P. Gibson; P. Bellos; S. Milam; S. Covington.

Unidentified pictures, misspelled names, the Miss East High Contest, misplaced ad copy, and lost pencils are just a few of the problems encountered by this year's yearbook staff. All of the staff members were inexperienced, which made the job of putting together an annual particularly difficult. But they came out of it with words of new knowledge and the 1965 GREY EAGLE.

## YEARBOOK STAFF

ANNUAL STAFF—SEATED: B. Payne; S. Reding; R. Turnbow; C. Pate; S. Goforth. SECOND ROW: P. Magers; S. Cutrell; C. Phillips; L. Mason; M. Casey; S. Talbert; D. Hannah, Sponsor

- Editor--Nancy Eaker  
 Assistant Editor--  
 Jenny Osborne  
 Business Manager--  
 Roger Turnbow  
 Business Staff--Minka Casey  
 Connie Pate  
 Becky Payne  
 Sharon Reding  
 Sharon Talbert
- Art--Sheryl Goforth  
 Copy--Cathy Jenkins  
 Nancy Woody  
 Classes--Linda Mason  
 Shelia Covington  
 Students--Patsy Bellos  
 Suzette Milam  
 Organizations--Andrea Hagewood  
 Pat Gibson  
 Activities--Starr Casey  
 Sharlena Phillips  
 Sports--Butch Stewart  
 Jimmy Kent  
 Peggy Magers  
 Honors--Emily Crowder  
 Typists--Susan Cutrell  
 Margie DeMoss



## CIVINETTES

The Civitans and Civinette s are serv-ice clubs that work to improve the school's facilities. The boys played two games of basketball against the Key Club to raise money. The first game was won by the Civitans and the second the winners were "that other club." The Shuffler's Combo also entertained at a Civitan assembly to help the club raise money for the individual trophies at the sports banquet and to help buy the scoreboard for the new gym. The Civinettes held their two informal initiations and participated in a formal initiation with the Civitans. The girls sold Christmas bows to buy additional mirrors for the school.

CIVINETTES—RIGHT BACK: S. Casey; E. Crowder; S. Wingate; L. Mason; C. Oliver; E. Jackson; P. Edens; R. Quinn; G. Drennon; B. Edens; L. Hale; P. Magers; W. Ashburn; G. Geiger; A. Hagewood; CENTER RIGHT: Martin, Sponsor; N. Eaker, Chaplain; C. Pate, Treas.; N. Woody, V. Pres.; L. Conquest, President; M. McCord (not pictured, Secretary).



## CIVITANS

CIVITAN CLUB—FRONT ROW: J. Jones; President; M. Dunham, V. Pres.; B. Barnes, Sec.-Treas.; J. Westfield, Chaplain. SECOND ROW: T. Davidson, C. Edens; J. Bowers; F. Hayes; J. Kent; THIRD ROW: G. C. Jenkins; B. Harrington. FOURTH ROW: D. Griffin; R. Stiltz. FIFTH ROW: B. McKennon; S. Cavnar. SIXTH ROW: J. Wilson; B. Pomeroy. SEVENTH ROW: J. Calvert; D. Allen; B. Green. EIGHTH ROW: C. Sloan; B. Knight.



## KEY CLUB

Those attractive black East Eagle sweat shirts seen on students at the school were one of the projects of the Key Club. This boys' club is a service organization that works for the school's improvement. Another money-making project was the two basketball games with the Civitans. The Key Club members proved the stronger of the two as they emerged victorious in the rematch game.



KEY CLUB—TOP LEFT: C. Stanley; B. Stewart, President; J. Ramsey, Chaplain; J. Bush, Sec.-Treas.; M. Collier, Sergeant at Arms; V. Overall, V. Pres.; D. Kelley; J. Freund; G. McCrary; D. Crafton. TOP RIGHT: G. Pomroy; D. Hill; T. Bonds; D. Henderson; E. Chitwood; J. Keef; R. Dixon; R. Reed; R. Huff; K. Smith, Sponsor.

## Y-TEENS

"Potato chips for sale!" is the chorus of the Y-Teen girls as they work on one of their money-making projects to finance some of their service activities.

One of their most outstanding projects was their Christmas drive to gather clothes for the less fortunate.

Y-TEENS—FRONT ROW: Mitchell, Sponsor; L. Mason, V. Pres.; P. Magers, President; P. Shaffer, Secretary; Haynie, Sponsor; J. Twilley, (not pictures, Treasurer).





# LIBRARY CLUB



LIBRARY CLUB-FRONT ROW: S. McGlothlin; S. Moran; S. Williams; S. Holt; D. Milsap; C. Moran; H. Bledsoe; J. Coffee; S. Thompson; SECOND ROW: D. Binkley; M. Beard; G. Griffin, Scrapbook Chairman; L. Hendricks, V.Pres.; S. Goforth, President; N. Eaker, Treas.; F. Holt, Secretary; Payne, Librarian. THIRD ROW: J. Olphie; L. Whited; C. Hawkins; B. Tillman; E. Mathis; E. Shelton; G. Stafford; J. Graves. FOURTH ROW: R. Mabry; B. Garner; V. Thompson; J. Sloan; P. Jones; P. Skipper; M. Batey; P. Pichard; L. Buchanan.

Up to their necks in newly arrived books, inventory lists, and pages for the scrapbook, the Library Club members still manage to help others use the library. As a reward for their efforts, nine students attended the Library Assistants' Convention at MTSC and two club parties were held.

## CHRISTIAN SERVICE

As their name implies, this club concentrates on service projects of a Christian nature. This year, however, the Christian Service members worked mainly to build up their treasury for next year.



CHRISTIAN SERVICE CLUB-FRONT ROW: W. Ashburn, Sergeant at Arms; P. Moss, V. Pres.; L. Pryor; P. Reigal, Sec.-Treas.; Hendrick, Sponsor. SECOND ROW: M. Merryman; B. Newton; D. Jones; M. Hager, President. THIRD ROW: G. Wood. FOURTH ROW: B. Green; L. Hale; J. Carr; S. Sanders. FIFTH ROW: D. Crafton. SIXTH ROW: E. Gregory; K. Gant; B. Wright; P. Gibson.



AUDIO-VISUAL-FRONT ROW: M. Greenfield; M. Windsor, Treas.; R. Roach, V.Pres.; J. Gilbert, Pres.; R. Chance; W. Fisher; J. Dickens. STANDING: E. Chitwood; J. Harper; C. Adams; J. Windsor; C. Escue; R. Dale; W. E. Sullivan; R. Hall, Sec.; G. Pomeroy; C. Stanley.

Though the Audio-Visual Club has only a small membership, its duties include everything from controlling the sound during assemblies to managing the lights for a special program. Even when "unforeseen circumstances" develop, these boys are still able to keep things under control and solve the problem.

## AUDIO-VISUAL

"Go, Eagles!" echoes through the school during Pep Club meetings as the members practice cheers with the cheerleaders. The members attend athletic activities and yell for their favorite team, the Eagles.

## PEP CLUB

PEP CLUB OFFICERS: P. Edens, President; B. Robinson, V. President; S. Spelta, Secretary; B. Rippy, Treasurer; Miss Young, Sponsor.





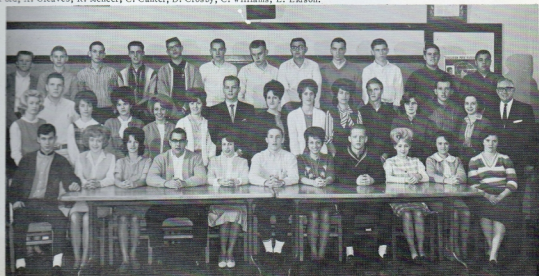
**D. E. CLUB** D. E. CLUB-FRONT ROW: R. Milam, Par.; P. Frank, Sec.; D. Stephens, Pres.; K. Green, V. Pres.; D. Stephens, Treas.; P. Hinkle, Rep. SECOND ROW: V. Holland; J. Davis; C. Hamilton; C. Angell; J. Hicks; J. Shadix; J. Bland; L. Robinson; R. Kiphart; R. Thrower; M. Proctor; D. Lea; J. Durham; Mr. Anderson, Co-Ordinator. THIRD ROW: F. Watts; Sa. Wagenman; D. Schoonover; M. Lovelace; L. Lilley; J. Wilson; E. McWilliams; R. Pomeroy; P. Crowell; D. Bryant; C. Mitchell; L. McKinney; M. Bullard; M. DeMoss. (Not Pictured: H. McCawley.)

The students who take Distributive Education and Diversified Occupations are the "workers" of the school. They attend classes in the morning and hold down part-time jobs in the

afternoon for which they receive grades and scholastic credits. D.E. Students concentrate on the selling end of business while D.O. students have other types of jobs.

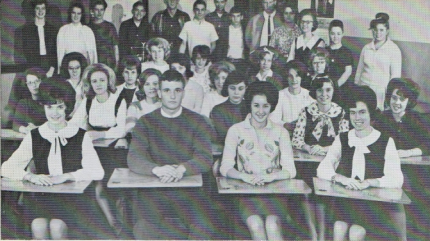
D. O. CLUB-FRONT ROW: D. Jones; P. Moss, Treas.; P. Grandmaison, Rep.; W. Sawyer, V. Pres.; L. Carpenter, Secretary; D. Grubbs, President; R. Quinn, Student Council; S. Bumbalough, Guidance; J. Raymer, Devotional; F. Reece; C. Russell. SE COND ROW: J. Hooper; J. Ragan; L. Moore; J. Wells; B. Robinson; V. Anderson; J. Wilson; C. Johnson; G. Webster; H. Fryar; G. Hudgins; D. Hester; R. Choate; C. Scheuerman; Mr. Grant, Sponsor. THIRD ROW: J. Wakefield; D. Manley; D. Jordon; J. Hibdon; R. Hughes; K. Ford; A. Gleaves; R. Mencer; C. Canter; D. Crosby; C. Williams; L. Eidson.

## D. O. CLUB



## FBLA

Through their club, the Future Business Leaders of America prepare themselves for Business Occupations and develop aggressive business leadership. Their project this year was selling East Eagle ink pens to pay for the adding machine purchased for the bookkeeping classes.



FUTURE BUSINESS LEADERS OF AMERICA: FRONT ROW: S. Reding, Treas.; F. Hayes, President; L. Hale, Secretary; S. Casey, State President. SECOND ROW: C. Evans; A. Davis; L. Flatt; D. Jenkins; F. McNeal; C. Pate. THIRD ROW: S. Hill; K. Harrigan; S. Milam; P. Morgan; P. Beene. FOURTH ROW: L. Cox; A. Jeannette; D. Hampton; J. Brewington. STANDING: M. Casey; L. Eddings; Miss J. Kness, Sponsor; J. Stovall; L. Annes; E. Melton; R. Manning; L. Chastain; K. Duke; L. Neal; B. Cunningham; D. Robinson; M. L. Burke.

FUTURE HOMEMAKERS OF AMERICA, SEATED: B. Harrison, 3rd V. Pres.; R. Travis, Par.; V. Nash, Treas.; S. Bratten, 1st V. Pres.; S. Davis, Sec.; L. Moss, 2nd V. Pres. SECOND ROW: E. Lifset; M. Logue; Mrs. Pinkerton, Sponsor; R. Finney; S. Brinlee; M. Casey; C. Padgett; C. Vaughn; Mrs. Cabler, Sponsor; S. Brooks. THIRD ROW: S. Williams; C. Russell; D. Jones; P. Morgan; P. Beene; N. Young; P. Smith; B. Goosetree.

## FHA

Managing homes and taking care of children are eventual goals of the Future Homemakers. They attended a sub-regional meeting at West High and were the hostesses at a similar meeting at East in January. The girls had two cake sales to raise money and gave a formal banquet at the end of the year.



## EAST HIGH RED CROSS CLUB



RED CROSS CLUB, SEATED: R. Shelton, Secretary; B. Fulton, President; S. Cutrell, Treasurer; B. Dickson, Chaplain. N. Price; S. Weaver; G. Kirby; G. Elmore; M. Gentry; B. Cunningham; J. Adams; J. Sloan; A. Davis; B. West; G. Buchanan; Mrs. Creceilius, Sponsor.

The main project of the Red Cross Club was to visit the Senior Citizens of this community, at various times during the year. In addition to this project, the girls helped finance

High School Council publications and programs for needy children with the money collected from the Red Cross membership drive.

## RED CROSS

FUTURE TEACHERS OF AMERICA, SEATED: W. Parsley; D. Goins; L. Short, Pres.; C. Phillips, Treas.; D. Bruce; J. Weatherly. STANDING: J. Osborn; Miss Sneed, Sponsor; J. Clifford. (Not Pictured: C. Jenkins, Sec; G. Barnett, V. Pres.; B. Wilson; K. Mabry).



## FTA

The many activities of the Future Teachers included making Christmas favors for a rest home, participating in Lily Tag Day at the April FTA Convention at Austin Peay, and installing their 1965-66 officers in May. The aim of these and other activities is to interest students in the profession of teaching.



## FORENSIC CLUB

Another area of competition in which East students excel is that of forensics. Under the direction of Mrs. DeJarnette, they compete with students from other schools in different areas of public speaking. The many forensic meets each give these boys and girls an opportunity to improve their speaking ability by actual practice.



NFL, FRONT ROW: P. Hinkle; J. Osborne; D. McIntyre; G. Drennan; C. Scheuerman; M. Brazil; B. Craighead. SECOND ROW: D. Reed; D. Earhart; G. Geiger; S. Carlton; J. Robinette; D. Dorsett; B. Dickson. THIRD ROW: D. Lane, Sec.-Treas.; Mrs. DeJarnette, Sponsor; R. Roach, President; S. Wingate, V-Pres.; M. Epperly; D. Griffin; J. Kent; B. Fulton; B. Bruce; S. Parrish; B. Wilson; L. Craus; C. Dukas.

LATIN CLUB, FRONT ROW: D. Binkley; B. McClearn; J. Weatherly; S. McGlothlin. SECOND ROW: D. Lane; J. Escue; D. Talley. THIRD ROW: S. Carlton; M. Batey; M. Hager; R. Carden; M. Brazil; Mr. Traugher, Sponsor.

## LATIN CLUB

Under the sponsorship of Mr. Traugher, the Latin Club works to promote interest in the study of Latin and to learn more about the culture of ancient Rome. The goal of this club is to become a member of the Junior Classical League and to acquire better materials for the Latin classes.







FRENCH CLUB, SEATED: D. Lane, V. Pres.; R. Turnbow, President; M. Epperly, Secretary; J. Robinette, Treas.; STANDING: J. Stovall; M. Fuqua; B. Walters; P. Skipper; Mrs. Payne, Sponsor; C. Phillips; P. Gibson; B. Craighead; L. Boyd; J. Carr; S. Parrish; S. Westfield; J. McDroom; J. Vaughn; S. Hawkins.

## FRENCH CLUB

Students who study languages with Mrs. Louise Payne can join the French or the Spanish Club to learn more about the cultures of the French or Spanish people. These two clubs also arouse interest in language among East students by their various projects. The French Club presented a play during assembly while the Spanish Club sponsored a benefit dance for the Pan-American countries.

## SPANISH CLUB

SPANISH CLUB, FRONT ROW: K. Hinson; T. Parlon; G. Griffin; P. Neal; C. Fawn; B. Malone; J. Graves; E. Mathis; M. Rose; SECOND ROW: M. McCloud; S. Thompson; L. Buchanan; D. Rucker; C. Hawkins; THIRD ROW: N. Price, Secretary-Treasurer; N. Smith, V. Pres.; D. Roach, President; Mrs. Payne, Sponsor; A. Nevil; R. Adcock; D. Henderson; J. Underwood; R. Lott; T. Fryer; S. McPherson; R. Mockmore; M. Miles; T. Brown; L. Sandlin; S. Clemens.





MATH CLUB, FRONT ROW: L. Boyd, President; S. McNeal, Treasurer; S. Wingate, Secretary; R. Turnbow, V. Pres.; SECOND ROW: B. Mitchell; F. McNeal; R. Carden; J. Gifford. THIRD ROW: J. Osborne; A. Hagewood; S. Richardson; E. Crowder; W. Ball. FOURTH ROW: D. Hannah, Sponsor; K. Oliver; M. Dunham; J. Westfield; R. Hall; P. Simmons; L. Conquest. FIFTH ROW: D. Mayfield; J. Dickens; J. Rogers; A. Norris; R. Downey; G. Leigh; C. Williams; S. Nichols; S. Westfield; C. Kimble; E. Cathey; B. Wedekind; W. Martin; M. Fuqua.

## MATH CLUB

The Math Club, under the direction of Miss Dean Hannah, has a well-planned and successful year. This honorary club for math students is a chapter of the National Math Club, Mu Alpha Theta. The many interesting geometric figures seen at East around Christmas were the work of the Math Club.

One of our newly organized clubs this year, the Science Club, has promoted interest at East High in scientific research. For their first project, the club members concentrated on the study of bacteria.

## SCIENCE CLUB

SCIENCE CLUB, SEATED: J. Costello, Secretary-Treasurer; L. Brassell; W. Cunningham, Vice Pres.; D. Hankins; P. Simmons; STANDING: T. Parlone; D. Arrant; D. Lokey; W. Collins; B. McClearn; Mr. Mitchell, Sponsor; R. Johnson, President; D. Talley; D. Stamps.





ART CLUB, FRONT ROW: D. Hankins; R. Johnson; N. Richardson; S. Goforth; C. Crawford; G. Wood; Mr. Vaughn. SECOND ROW: R. Allen; D. Roach; W. Cunningham; J. Prescott; M. Merrill; R. Bowers; K. Hinkle. THIRD ROW: J. Harr; M. Merryman; J. Patton; L. Hale; C. Kazian; L. Pryor.

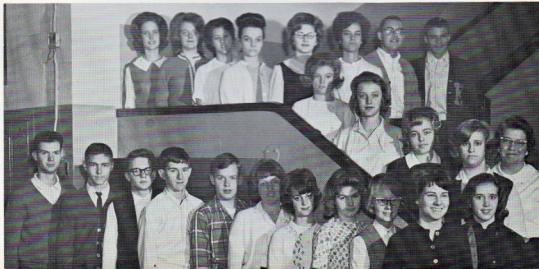
## ART CLUB

Talented artists have a chance to work in the Art Club with other like-minded students under the direction of Mr. Vaughn. In addition to studying more about the different phases of art, these members help other organizations by painting professional-looking signs for them.

## MUSIC CLUB

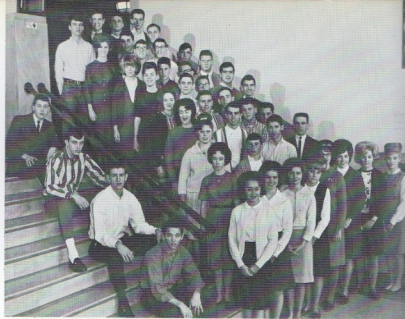
Musicians at East have always been interested in the band and the chorus, but this year, they have their own special club. The Music Club, with Miss Southerland as sponsor, gives additional training to students who cannot take chorus as a regular subject.

MUSIC CLUB, FRONT ROW: J. Turner; B. Bruce; W. Parsley; B. Wedekind; J. Dunn; C. Wrye; A. Jeanette; V. Tucker; J. Osborne; P. Hinkle; J. Olfie. SECOND ROW: L. Anderson; B. Lassiter; N. Woody; S. Phillips; Miss Southerland, Sponsor; THIRD ROW: B. Wilson, Secretary; K. Hinson; M. McIntyre; D. McIntyre; S. Hunt; P. Bellos; W. Sawyer, Treasurer; L. Johnson, President.



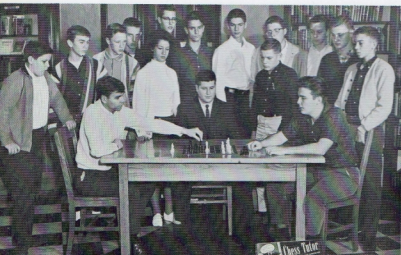
## BOWLING CLUB

"I got a strike!" was often the happy exclamation of a Bowling Club member after a demonstration of his bowling skill. Students interested in competitive bowling improve their abilities and sportsmanship by playing once a week at the bowling alley with other members of their team.



BOWLING CLUB OFFICERS: D. Sullins, Chaplain; J. Keef, V. Pres.; D. Kelly, Treasurer; R. Dixon, Secretary. FRONT ROW; Edens, Richardson; Drennan; Jennings; Read; Crowder; Dukes; Edens. SECOND ROW: Peterson; Edens, Lovell; Knight. THIRD ROW: Burke, Stewart; Fryer; Judkins. FOURTH ROW: Kazian; Rogers; Ruth; Collier. FIFTH ROW: Merryman; Melton; Smith; Nichols. SIXTH ROW: Pack; Hale, Kenton; Elrod; Duke. SEVENTH ROW: Nash; Ramsey; Wood; Keef; Escue. EIGHTH ROW: Freund; Kent; Hayes; Adcock; Sewell. (Not pictured: B. McDonald, President.)

CHESS CLUB, FRONT ROW: D. Lane, V. Pres.; M. Gentry; J. Sbuttoni, Sponsor; G. Manly; R. Turnbow, Pres. BACK ROW: K. Spurlock; J. Humphrey; W. Powell; M. Miles; M. Stergel; C. Gregory; N. Richardson; L. Pitts; K. Chanler; B. St. John; M. Reid.



## CHESS CLUB

The ancient game of Chess is still enjoyed regularly by these ardent members of the Chess Club. They meet to learn the finer points of the game from each other, and simply to have fun as they pit their skills and wits against those of their opponents.



THE EAST HIGH CHORUS

## CHORUS

Under the guidance of East's new chorus teacher, Miss Frances Southerland, the chorus members greatly entertain their listeners while improving their singing skills and learning more about music. Their first opportunity to perform in public was the meeting of the Metro School Teachers in October. Next came the joint Christmas Concert with the Band. The student body was also privileged to hear the

chorus sing carols during an assembly program, and afterwards were invited to join in the singing under the direction of the student teacher, Mr. Stutzenberger of Peabody College. The Chorus members attended the Chorus Festival held at MTSC, and in April, gave their Spring Concert. Their last public appearance was at the June graduation exercises.



All-State Chorus singers selected in competition with chorus members from other schools: Deanne Robinson; Linda Ireland, Becky Hyde; George Barnett; and Bill Barnes.





Richard Downey, Drum Major.



Majorettes—Linda Eddings; Wanda Ball, Kathy Oliver, Pat Bond, Janet Brown, Judy Twilley, and Pat Edens, Head Majorette.





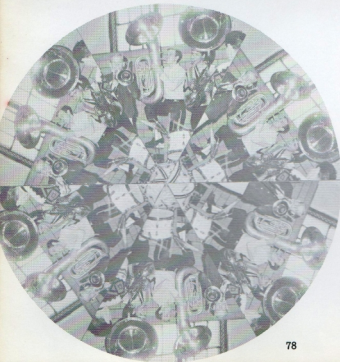


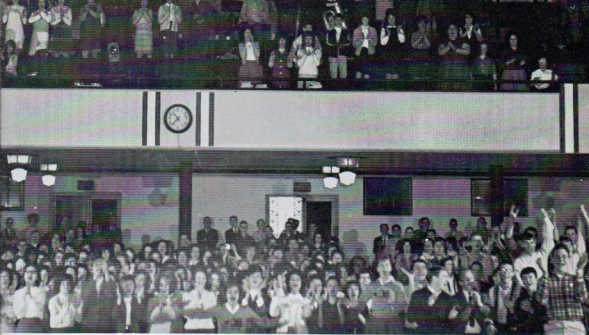
## BAND

Whenever a band member approaches, you can count on his whistling the melody of the band's latest marching number or newest concert piece. This is just one incident showing the interest of these music students in their organization. Beginning with a week of hard practice (and fun) at summer band camp, they never let up in their efforts to perfect their playing and their routines. The band, under the direction of Mr. Rufus Long, marched at all the football games, the Hill Billy Day Parade, the Christmas Parade, and the Marching Festival. During concert season, they performed at the Christmas Concert, the Concert Festival, and their Spring Concert. All in all, it has been a wonderful year for the East Band.



Color Guard—Barbara Burton,  
Barbara Lassiter, Brenda Byrum,  
and Cathy Jenkins.





# ACTIVITIES

Who could forget the beauty of Homecoming, the anticipation of the Prom, the excitement of pep meetings, or the suspense of the Miss East High Contest? Yet, behind each activity were the students. There were never enough hands to go around, always work to do; but with the work came wonderful times, lasting memories, and a satisfying sense of achievement. There were signs to be painted, cars to be washed, practice sessions to attend, but from the experiences of working together emerged a more mature girl or boy.

These things are past now, but the laughter, as well as the tears, are remembered when spectators look back on those activities, which are gone forever, or look ahead to those which are yet to come.



In September, the Student Council sponsored a party in the cafeteria to welcome the new sophomores. The students danced to records while they gobbled cookies and guzzled punch. Everyone, including the few stray juniors and seniors present, had a very enjoyable evening.



## RETURNING TO SCHOOL

After three months with no homework, sunburns, part-time jobs, and hours of play, boys and girls once more resumed their studies at that institution of learning--East High School. Most welcomed the change of pace and began planning for another action-packed school year.

Juniors Dickie Delk and Jenny Osborne find it easy to slip into the habit of attending classes once more.



Sarah Williams and Frances Holt renew friendships by chatting during the five-minute break between classes.



Although finding the schedule changed around a bit, Seniors Johnnie Freund, Vernon Overall, Pa Edens, and Liz Jackson discover that the new routine has not affected their enjoyment of lunch.



Sophomore Pam Davenport soon learns what monitors are for, and she dutifully shows her hall pass to Emily Crowder.

## THE FAMILIAR ROUTINE

After a few weeks had passed, that old familiar routine was with us once more. Although a few changes had been made, the students soon made the necessary adjustments, and the days again became a succession of classes, faces, and activities.

This year's expanded bus service provided welcome transportation for the many students who live in the outer sections of the school zone.



As any "stair-gazer" will tell you, this is the view seen by looking down the stairwell from the fourth floor.



The student telephone, located in the front of the office, is constantly in use. Lynn Hale is using it to tell her mother that she will be late getting home from school.





Sandra Bobbitt, Bobby Knight, Linda Ireland, Billy Lovell, Butch Stewart, Sharon Reding-Queen, Jerry Bush, Donna Olphie, Doug Collins, Linda Ogles.

## HOMECOMING 1964

Miss Sharon Reding, 1964 Homecoming Queen



Sharon and Co-Captain  
Vernon Overall

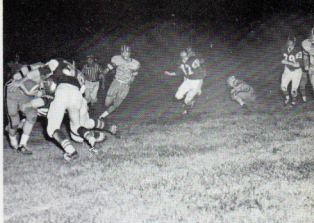


Sharon and Co-Captain  
Johnnie Jones





Pat Edens, Band Sponsor  
Richard Downey, Drum Major



EAST 14, B.G.A. 24



The 1964 Homecoming actually began when the football players elected the Queen and her Attendants. The excitement mounted until the half-time exercises of that very night when the girls and their escorts drove onto the football field. Pat Edens was elected Band Sponsor by the band members and presented with flowers

by Richard Downey. The climax came when Sharon Reding received her crown and an unprecedented two royal kisses. The evening was marred only by the 24-14 loss to a powerful B.G.A. team, but this did not stop the fun at the dance held afterwards in the gym.

Homecoming Dance with music by the Del-Ray Combo.



## CHRISTMAS AT EAST HIGH



Majorettes K. Oliver, L. Eddings, P. Edens, P. Bond, J. Brown, and J. Twilley strut down Broadway in the Christmas Parade.



Accompanied by Linda Ireland, vocalists Pauløste Hinkle and Jimmy Kent rehearse their parts in the Christmas Concert.

Lynda Baker, Gayle Kirby, George Barnett, and Donnie Tillman work to fill up their Christmas baskets.



The flurry of activities announced the approach of Christmas as East students began preparations for the holiday season. It is a tradition to collect food, toys, and clothing to make up baskets for needy families. These baskets were delivered on the day before the start of Christmas vacation after the homeroom parties and school-wide assembly program. Other activities include putting up decorations, the Christmas Concert by the band and chorus, various club projects, and the Christmas Parade in which the East Band participates.

This was the finished product of the "Chalk Talk" given by Glen Grosman at our Christmas Assembly Program.





The school system began a new series of menus after the first of the year, and, much to the delight of Brenda Goostree, put in new flavors of ice cream bars.



Charles Cleveland proudly displays his newly acquired class ring to an equally proud junior, Sharon Talbert.

## BACK TO SCHOOL AGAIN

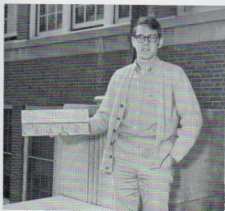
After two luxurious weeks of Christmas vacation; East students had to begin getting up early once more and return to school.

Second semester activities were, if possible, even more exciting than those of the first year. No one could believe that the year would end in just a few short months.



Seniors Wayne Martin, Donna Dorsett, and Linda Conquest study hard for their rapidly approaching Mid-Term Exams.

"Only 50¢ a box, 10¢ apiece" chants Greg Wood as he sells candy to raise money for one of the many projects at East.



The Pep Band: William Fisher, Richard Roach, Ronnie Phillips, Bob Bruce, Richard Downey, Roger Turnbow, David Scout, and, hidden from view, drummer Johnny Morris.



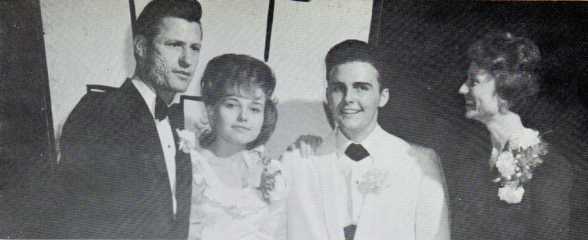
## EAGLES PLAY IN CHAMPIONSHIP GAMES

The Eagle teams excelled in both football and basketball games this year. With a 7-3 record in football, the Eagles were invited to play a strong Hartsville team in the Exchange Bowl. Although the outcome was in Hartsville's favor 24-14, the fans got their money's worth watching the hard-fought game. With only a mediocre 9-11 record in basketball, the team emerged as 18th District Runners-Up and entered the Region V Tournament where they were finally beaten by Overton in an over-time game.

Johnny Jones downs a Hartsville player in the Exchange Bowl game.

Jubilant fans hoist Joe Keef to their shoulders after an important win over Waverly in the Region V Tournament.





Discussing last-minute details before the show are the emcee, Doc Holiday from WKDA radio, managers Nancy Woody and Roger Turnbull, and faculty sponsor, Miss Dean Hannah.

## PREPARING FOR THE CONTEST

Many said this year's Miss East High Contest was "the best ever," but behind the finished product lay many frantic consultations, hesitant decisions, and the inevitable

hours of hard work. Thanks could go to many people, but the people shown on this page and the organizations which they represent were some of the hardest workers.



Two members of the Audio-Visual Club, John Gilbert, seated, and Randy Hall, confer over their communications system to some of the other boys working with lights in the balcony.



Mr. Donald Vaughn, the art director and creator of the stage sets, makes a few adjustments with the help of one of his students, Greg Wood.





While the five judges were making their decisions, entertainment was provided by the Shufflers Combo. Its members are Jerry Bowdoin, Jim Fuqua, Larry Bullion, Bennie McDonald, and Ronnie Reynolds.



## MISS EAST HIGH CONTEST

This year twenty-two girls competed in the talent and formal divisions for the title of Miss East High 1965. The judges narrowed the field down to five finalists, who were then asked to give a short, unprepared talk on a word selected

from a glass container. On the basis of these, two runners-up and a winner were chosen. At left is Kathy Oliver, the winner, giving her talk on "friendship."

The five finalists: Mary Ann McCloud, dance; Kathy Oliver, dramatic reading; Linda Hale, song; Pat Shaffer, dance; Marilyn Epperly, original puppet routine.







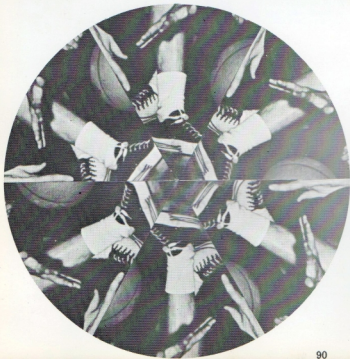
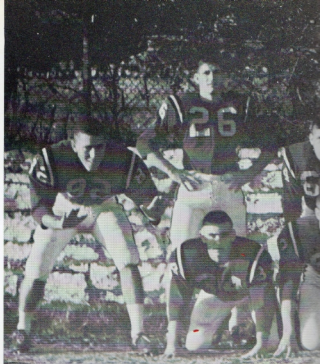
The winner, Kathy Oliver, is presented with a dozen red roses by Roger Turnbow, and she is crowned and given a trophy by Miss East High 1964, Mrs. Dianne Petty.

## THE JUBILANT WINNER

The bewildered but jubilant winner is surrounded by happy friends who congratulate her on her success.



Second Runner-Up: Paf Shaffer  
Miss East High: Kathy Oliver  
First Runner-Up: Mary Ann McCloud





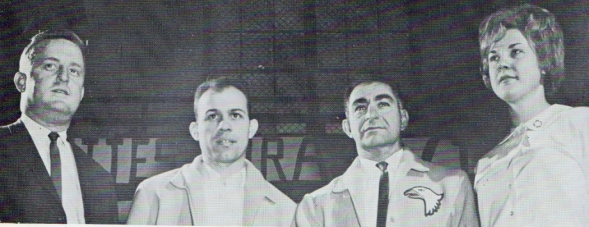
# SPORTS

The disappointment of defeat, the joy of victory—both have come to mingle in East High's kaleidoscope of memories.

The hours of practice and the determination can be measured only in the faces of those who fought and won . . . or lost.

This section is dedicated to those students who devoted their time and effort to East's athletic teams—to those who practiced in the hot sun of August or the cold wind of January.

There is no reward like that of winning, and East has had its share, despite sore muscles, rolls of tape, and vats of liniment. But win or lose, these students fought "for old East High," and we are proud of you.



COACHES: Kim Smith, William Kee, Vic Varallo, Head Coach, and Miss Helen Young.

## VARSITY FOOTBALL

One of the best football teams East has had in several years fourth their way to a 7-3 won-lost record and a chance to play in the Exchange Bowl. Some of the sure-to-be-remembered games were the victories over West, 19-0, and

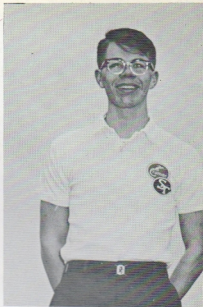
Litton, 6-0, and the bare defeat 21-20 at the hands of an unbeaten Hillwood team. The season ended with the Exchange Bowl game against Hartsville.



Football co-captains: Butch McKinnon, Johnny Jones, Vernon Overall.

## 1964 Varsity Football Season

East .....	26	Hume Fogs .....	0
East .....	19	North .....	6
East .....	13	Cohn .....	0
East .....	19	West .....	0
East .....	14	B.G.A. ....	24
East .....	6	Litton .....	0
East .....	7	Cumberland .....	20
East .....	13	Franklin .....	0
East .....	20	Hillwood .....	21
East .....	16	Maplewood .....	6
<b>Exchange Bowl</b>			
East .....	6	Hartsville .....	26



A boy who is just as busy as any of the players is the general sports manager, Mike Dunham. Mike is always there when needed and does much to keep all sports activities running smoothly.

1964 FOOTBALL TEAM, FRONT ROW: J. Sanders, B. Harrington, D. Allen, R. Stiltz, W. Reed, J. Bowers, B. Baraes, V. Overall, S. Cavar, T. Heald, T. Davidson. SECOND ROW: B. Smith, W. E. Sullivan, C. Sloan, T. Combs, D. Griffin, D. Fox, B. Stewart, B. McKinnon, J. Jones, B. Green, T. Depasquo, L. Prince. THIRD ROW: B. Bird, L. Gregory, D. Puryear, T. Bond, W. Williams, J. Duncan, M. Collier, B. Sewell, C. Stanley, G. Pomeroy, L. Johnson, G. Manley. FOURTH ROW: P. Lambert, D. Hill, W. Taylor, B. Wright, W. Powell, M. Miles, R. Huff, R. Bowers, J. Holcomb, M. Dunham, Manager.







## THE EXCHANGE BOWL GAME

On the night of November 20, 1964, the mighty Grey Eagle football team met the Hartsville team on the Litton High School football field. This was the long-awaited Exchange Bowl Game. Although the 24-14 outcome was disappointing to the East fans, they

fully appreciated this opportunity to compete in a championship game. A dance was held after the game in the Litton gym. The evenings activities were sponsored by the Exchange Club of Nashville.



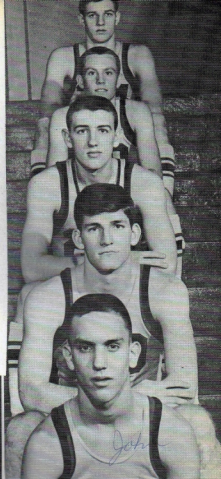
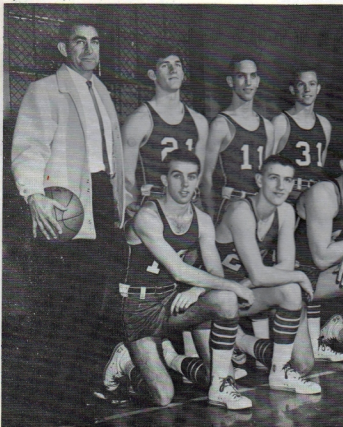
# VARSITY BASKETBALL

Basketball season gave fans several disappointing losses but also some particularly sweet victories. Some games to be remembered are the wins over Stratford, 66-59, Litton, 80-70, and Overton, 69-58. Ending the regular season with only a 9-11 record, the Eagles came out second in the 18th District Tournaments and played two games in the Region V Tournaments. The last game of the 1964-65 season was a heartbreaking loss to Overton, 61-59 in over-time.

*Lot of luck in the  
future to a nice  
and cute girl.  
John*

18th District  
Runners-Up

VARSITY BASKETBALL TEAM, KNEELING: Butch Stewart, Joe Keef, Pete Cannon, Steve Cavnar. STANDING: Coach Varallo, Butch McKinnon, John Ramsey, G. C. Jenkins.

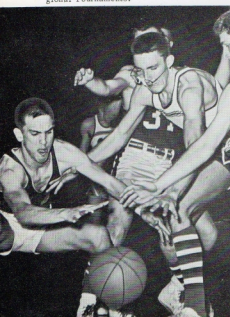


# B-TEAM BASKETBALL



B-TEAM: D. Allen, Terry Davidson, B. Sewell, R. Mockmore, T. Heald, Coach Smith.

John Ramsey fights for the ball in the Waverly game in the Regional Tournaments.



## 1964-65 Basketball Season

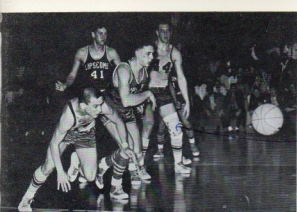
1. East .... 41	1. Overton ..... 57
2. East .... 61	2. West ..... 64
3. East .... 68	3. Donelson ..... 80
4. East ... 59	4. Litton ..... 60
5. East .... 56	5. Franklin ..... 47
6. East .... 67	6. Clarksville .... 77
7. East .... 55	7. Ryan ..... 62
8. East .... 66	8. Stratford ..... 59
9. East .... 80	9. Litton ..... 70
10. East .... 63	10. West ..... 67
11. East .... 60	11. Cohn ..... 56
12. East .... 75	12. Stratford ..... 92
13. East .... 64	13. Lipscomb ..... 83
14. East .... 63	14. Franklin ..... 67
15. East .... 55	15. Ryan ..... 73
16. East .... 69	16. Overton ..... 58
17. East .... 50	17. Cohn ..... 44
18. East .... 51	18. M.B.A. .... 45
19. East .... 72	19. Mt. Juliet .... 54
20. East .... 51	20. Mt. Juliet .... 44

### Tournaments—18th District Regional

East .... 77	Hume-Fogg ..... 56
East .... 70	Lipscomb ..... 53
East .... 77	Howard ..... 75
East .... 63	Ryan ..... 67

### Region V Tournament

East .... 63	Waverly ..... 53
East .... 59	Overton ..... 61



John Ramsey and Pete Cannon--  
East 70, Lipscomb 53.



*My  
Room*

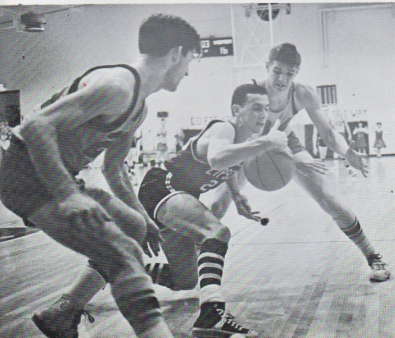
Joe Keef--East 63, Waverly 53.

## BASKETBALL IN ACTION

*To the girl of  
Kenny.  
Lots of luck  
to both of  
you  
Pete*



Evelyn Sweeney, Betty  
Moody, and Amanda  
Willis--East 39, Gallatin  
50.



Butch McKinnon and  
Steve Cavnar--Lip-  
scomb.



GIRLS' BASKETBALL TEAM KNEELING: G. Loftis; G. Sanders, D. Olphie, B. Moody, A. Willis, E. Sweeney, P. Beene, STANDING: J. Olphie, S. Covington, C. Jackson, P. Davenport, N. Stephens, B. Bolton, A. Jennette, L. Graves, Miss Young, Coach.



## GIRLS' BASKETBALL

EAST	OPPONENT
58	Overton 45
52	Donelson 71
73	T.P.S. 32
46	Hendersonville 69
47	Maplewood 69
51	Central 61
53	Stratford 67
31	Hillsboro 72
68	T.P.S. 44
54	Stratford 73
58	Hendersonville 77
54	Franklin 60
49	Mt. Juliet 67
51	Overton 78
33	Mt. Juliet 43
57	Franklin 61
<b>18th District Tournaments</b>	
63	T.P.S. 34
54	Mt. Juliet 61
<b>Region V Tournaments</b>	
39	Gallatin 50

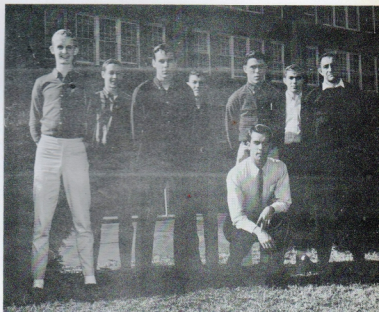
Miss Young confers with the three co-captains, Donna Olphie, Betty Moody, and Amanda Willis.



## SPRING TRACK TEAM

SPRING TRACK TEAM, KNEELING: W.E. Sullivan, D. Delk, D. Griffin, B. Stewart, V. Overall, D. Hill, J. Sanders. STANDING: D. Henderson, S. Gaddis, Johnny Adairs, T. Bonds, R. Swift, J. Norris, C. Stanley, J. Bryan, R. Bowers, Coach Varallo.

## 1964 CROSS COUNTRY



D. Henderson, J. Bryan, D. Delk, J. Stovall, B. Stewart, D. Griffin, S. Gaddis, Coach Varallo.





## RIFLE TEAM

RIFLE TEAM, KNEELING: J. Jones, Capt.; L. Morgan. STANDING: Coach Varallo; N. Richardson; S. Thompson; J. Bruce; P. Simmons; B. Green, B. Wright.

## BASEBALL TEAM



BASEBALL TEAM, FRONT ROW: W. Martin; R. Stiltz; B. Dale; B. McKinnon; K. Smith, Coach. SECOND ROW: W. Reid; D. Fox. THIRD ROW: M. Miles; F. Hayes; D. Kelly; J. Keef; E. Knight; R. Huff; S. Cavnar; W. Taylor; G. C. Jenkins.



## TENNIS TEAM

TENNIS TEAM:-FRONT ROW:  
R. Bawcum; J. Kent; G. Wood.  
BACK ROW: L. Bullion; B.  
Lovell.



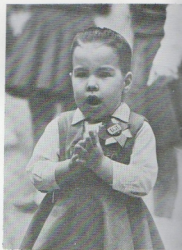
## CHEERLEADERS



CHEERLEADERS: C. Pate; B. Edens, Co-Capt.; P. Magers; E. Jackson; D. Lee; D. Bruce; L. Ogles G. Sanders;  
D. Olphie, Captain.



Clapping hands, stomping feet, and "Fight, team, fight!" are typical sounds wherever the cheerleaders are gathered. This may be at the afternoon practice session, Pep Club meetings, pep rallies, or a football or basketball game. The girls attended Cheerleaders' Clinic at Tennessee Tech for a week in the summer. There they learned new routines and cheers, and they also won three firsts in competition with other cheerleaders. This training and their weeks of practice paid off as the girls pepped up the spirit of the students with their snappy cheers at the games.



Mascot: Cindy Spelta

## ALTERNATES





Connie Pate



Peggy Magers

## CHEERLEADERS



Debbie Lee



Donna O'phie-Captain



Brenda Edens-Co-Captain



Liz Jackson



Gayle Sanders

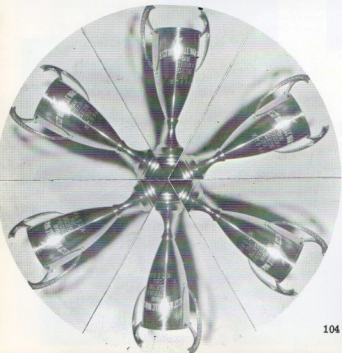
## 1964-65



Diane Bruce



Lynda Ogles





# HONORS

Our kaleidoscope would never be complete without remembering those students who were outstanding in many fields.

These, our superlatives, and others, who have achieved recognition outside East High, will join a long list of other Eagle graduates who have taken their places in life as politicians, scientists, executives, or a most important profession, the housewife and mother.

East High has been privileged to have a great number of outstanding men and women on its rolls. These people possess valuable traits which must be developed early in life; yet, the honor lies not within these pages, but within the person himself.





**HOMECOMING ATTENDANTS**

Sandra Bobbitt  
Donna Olphie  
Linda Ireland  
Lynda Ogles





**HOMECOMING QUEEN**

Sharon Reding

FIRST RUNNER-UP

Mary Ann McCloud



SECOND RUNNER-UP

108 Pat Shaffer



**MISS EAST HIGH**

Kathy Oliver



**PROM COURT**

Rita Finney  
Elizabeth Jackson  
Sandra Bobbitt  
Patty Frank

Is a real sweet girl. It's so sad when you get  
to be a single so make the most of your high school  
days they can be so wonderful & beneficial. Good  
luck with Kenny.

Keep Smiling  
Donna



PROM QUEEN

Donna Olphie





**VALEDICTORIAN**

Marion McCord

**SALUTATORIAN**

Nancy Eaker





**D A R MEDALIST**

Nancy Eaker

**CIVITAN MEDALIST**

Bobby Knight



Charles Williams, Senior Class Poet

Departing from school and leaving friends are some of the ideas flowing from the pen of Charles Williams, Poet of the Class of 1965. His poem entitled "Memories" was selected from several others by the English teachers as the one best describing the experiences of graduation.

*Vickie,  
Best of luck  
to you and Nancy  
He's a lucky boy  
Butch Stewart  
63-64-65*



1:56.9, the new state record for the 880 yd. run, set by Butch Stewart was one of the reasons why Butch was chosen as the 1964 Trackman of the Year. In addition to running the half-mile, he is a member of the mile relay team, runs the 440, and competes in the broad jump.

Hours of cramming facts, formulas, and figures into their brains filled the days of the Quiz Team members before they were scheduled to appear on WSIX-TV's "Classroom Quizbusters." The Team came out winners in their first contest with Lebanon, but they were not so fortunate in their second meeting as they fell to Litton. The Quiz Team is under the excellent guidance of Miss Dean Hannah.

QUIZ TEAM: Larry Boyd, Donna McIntyre, Nancy Woody, Captain, Robert Lane





**HISTORIAN**

Nancy Woody

**PROPHET**

Nancy Eaker

**GRUMBLER**

Johnny Westfield



**WILL MAKERS**

Pat Edens  
Bobby Knight





**MOST ATHLETIC**

Betty Moody  
Butch McKinnon



**MOST LIKELY TO SUCCEED**

Nancy Eaker  
Larry Boyd





**MOST POPULAR**

Brenda Edens  
Bobby Knight



**FRIENDLIEST**

Connie Pate  
Bo Wright



**MOST BASHFUL**

Sandra Bobbitt  
John Ramsey

*Good luck  
next year  
Bill Barnes*



**BEST ALL-ROUND**

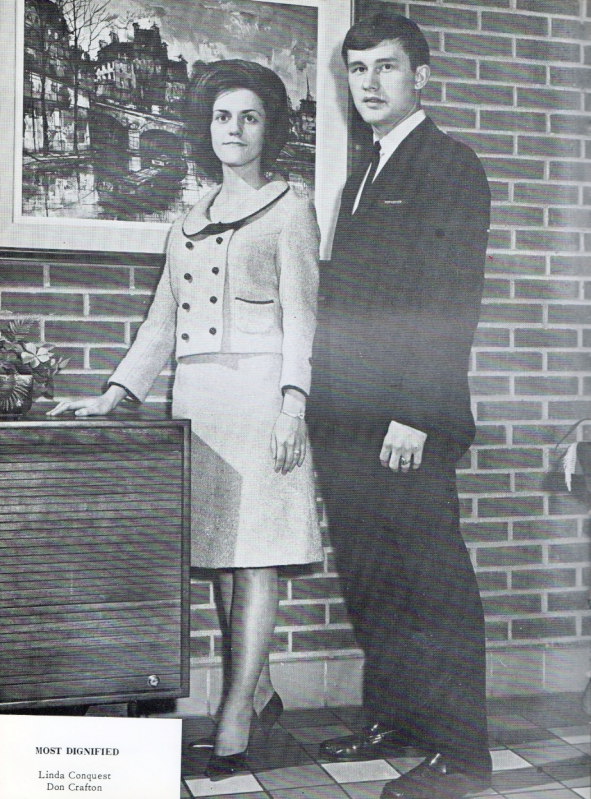
Donna Olphie  
Bill Barnes





**MOST VERSATILE**

Donna Jones  
Vernon Overall



**MOST DIGNIFIED**

Linda Conquest  
Don Crafton





**DAINTIEST GIRL**

Sharon Spelta

**NEATEST BOY**

Buddy Lawhorn



**PRETTIEST GIRL**

Rita Finney

**MOST HANDSOME BOY**

Butch Stewart



**WITTIEST**

Diane Bruce  
Donald Hankins





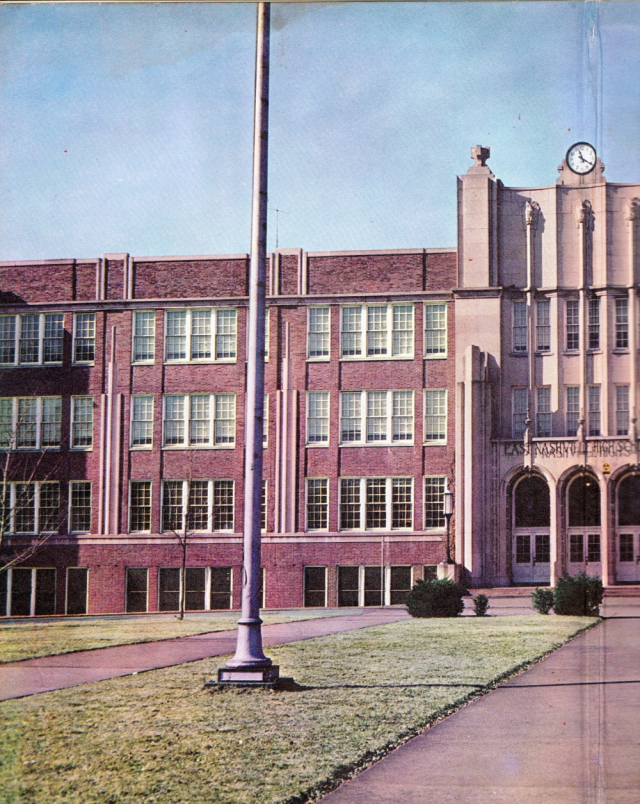
# ADVERTISERS

Our thanks to our advertisers, for without them, our yearbook would never have been possible.

A special thanks, too, to Ambrose Printing Company, our publishers; Wiles-Hood, our student and club pictures, the Jean Sardou Studio for senior pictures, and the Bing-Togue Studio for others.

Yes, these people have enabled us to produce a record of memories which will last for years to come. Patronize them, for they are our public.





EAST NASHVILLE HIGH SCHOOL

